

Auto Barcode Insert Training

Auto Barcode Insert_Training.zip



Auto Barcode Insert - Overview

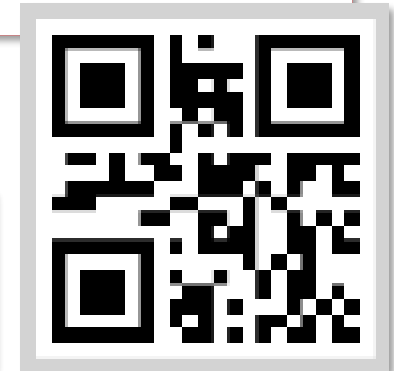
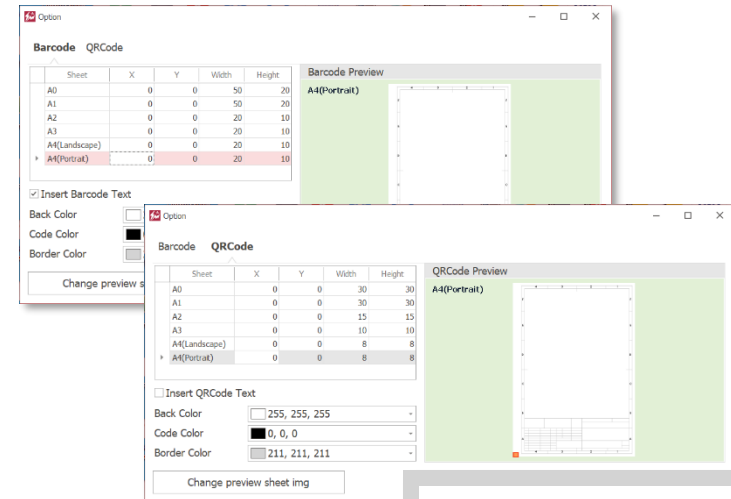
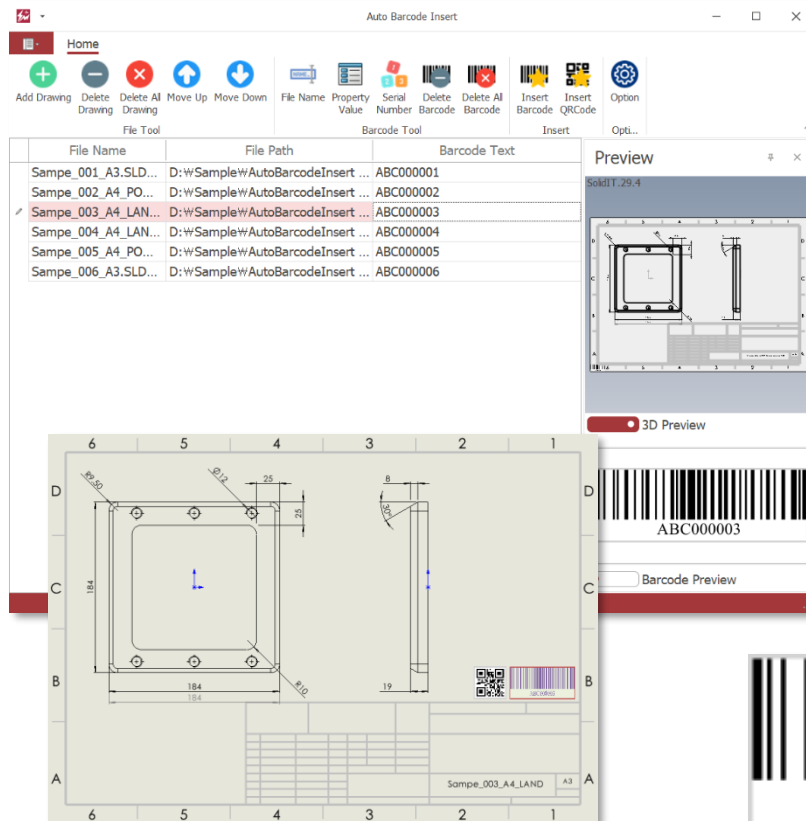
Main Functions

- Insert Barcode/QR code into multiple drawing
- Auto creating and inserting barcode/QR code based on file name and information of properties

Benefits

- Reducing designer's unnecessary working time by automating all process
- By inserting barcodes into drawings, information can be easily checked at the manufacture

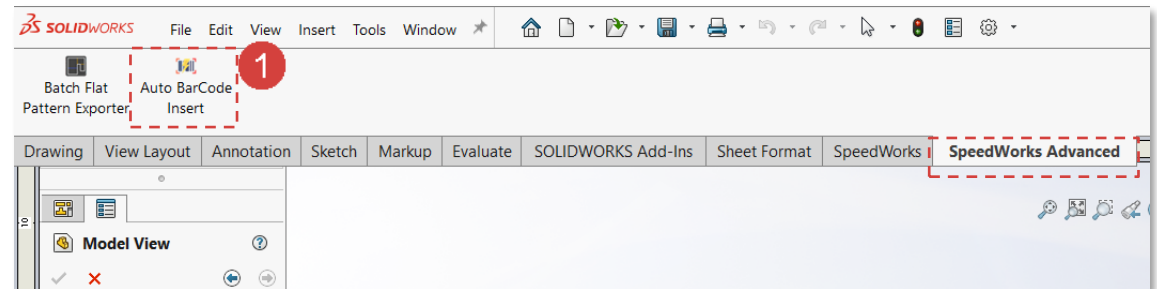
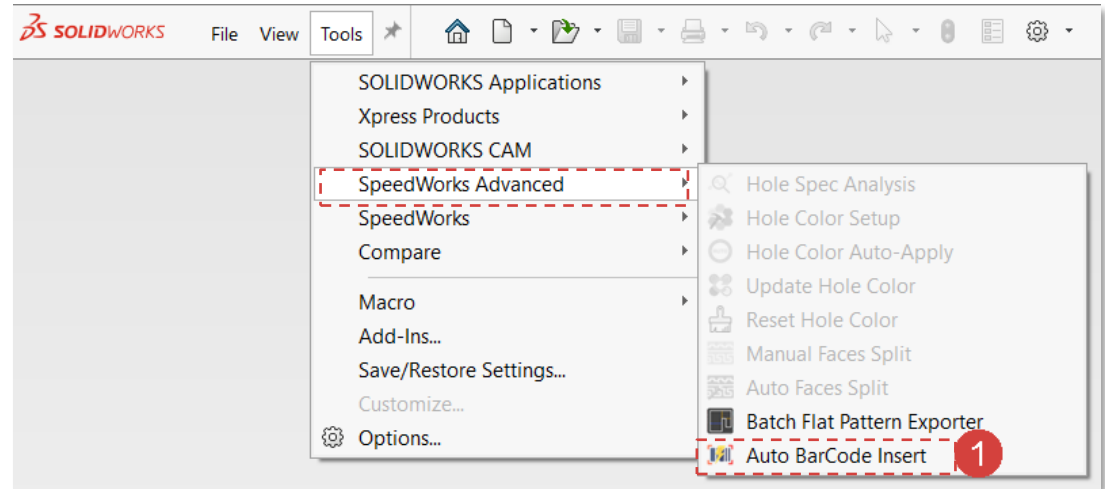
Course Objective: Follow the simple step-by-step instructions and learn how to use Auto Barcode Insert.



Auto Barcode Insert - Execute

1 Click **SOLIDWORKS** – [Tool] tab - [SpeedWorks Advanced] - [Auto Barcode Insert] to execute function.

or in Part/Assembly/Drawing files click [SpeedWorks Advanced] tab - [Auto Barcode Insert] to execute function.



※ You can download example files at Support page in SpeedWorks Homepage(<https://speedworks.info>).

Work on the part with the red circle (1) following instructions by yourself.
The part with the black square (1) is an additional explanation or a reference.

Auto Barcode Insert - Target Drawing Add

Work on the part with the red circle (1) following instructions by yourself.
The part with the black square (1) is an additional explanation or a reference.

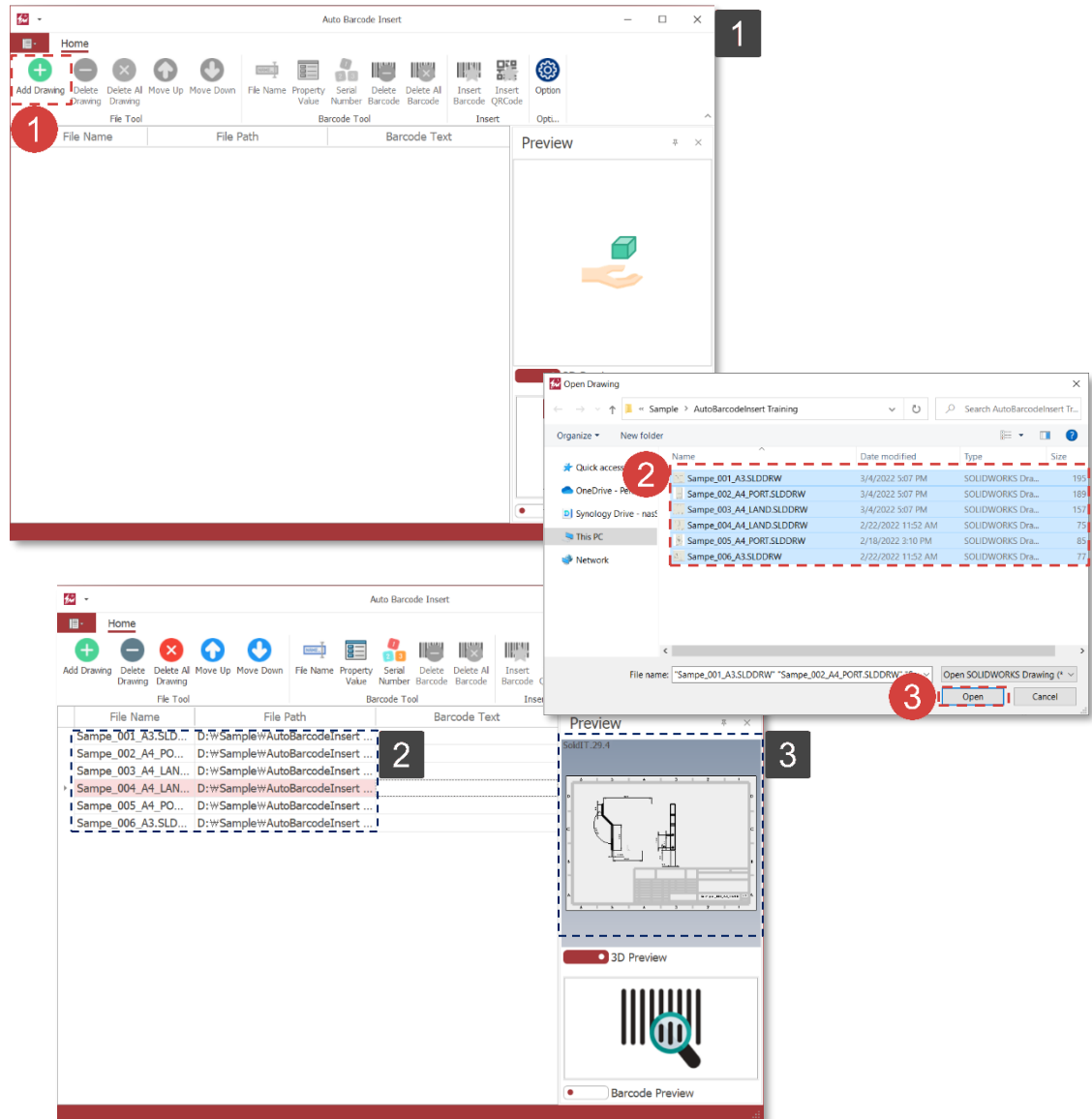
- 1 Click to [Add Drawing].
- 2 Select **Sampe_001_A3.SLDDRW**,
Sampe_002_A4_PORT.SLDDRW,
Sampe_003_A4_LAND.SLDDRW,
Sampe_004_A4_LAND.SLDDRW,
Sampe_005_A4_PORT.SLDDRW,
Sampe_006_A3.SLDDRW files among the sample files.

- 3 Click [Open] button to add file.

- 1 This is Auto Barcode Insert screen.

- 2 It is drawing added list.

- 3 Users can check preview of drawing when selecting item on list.

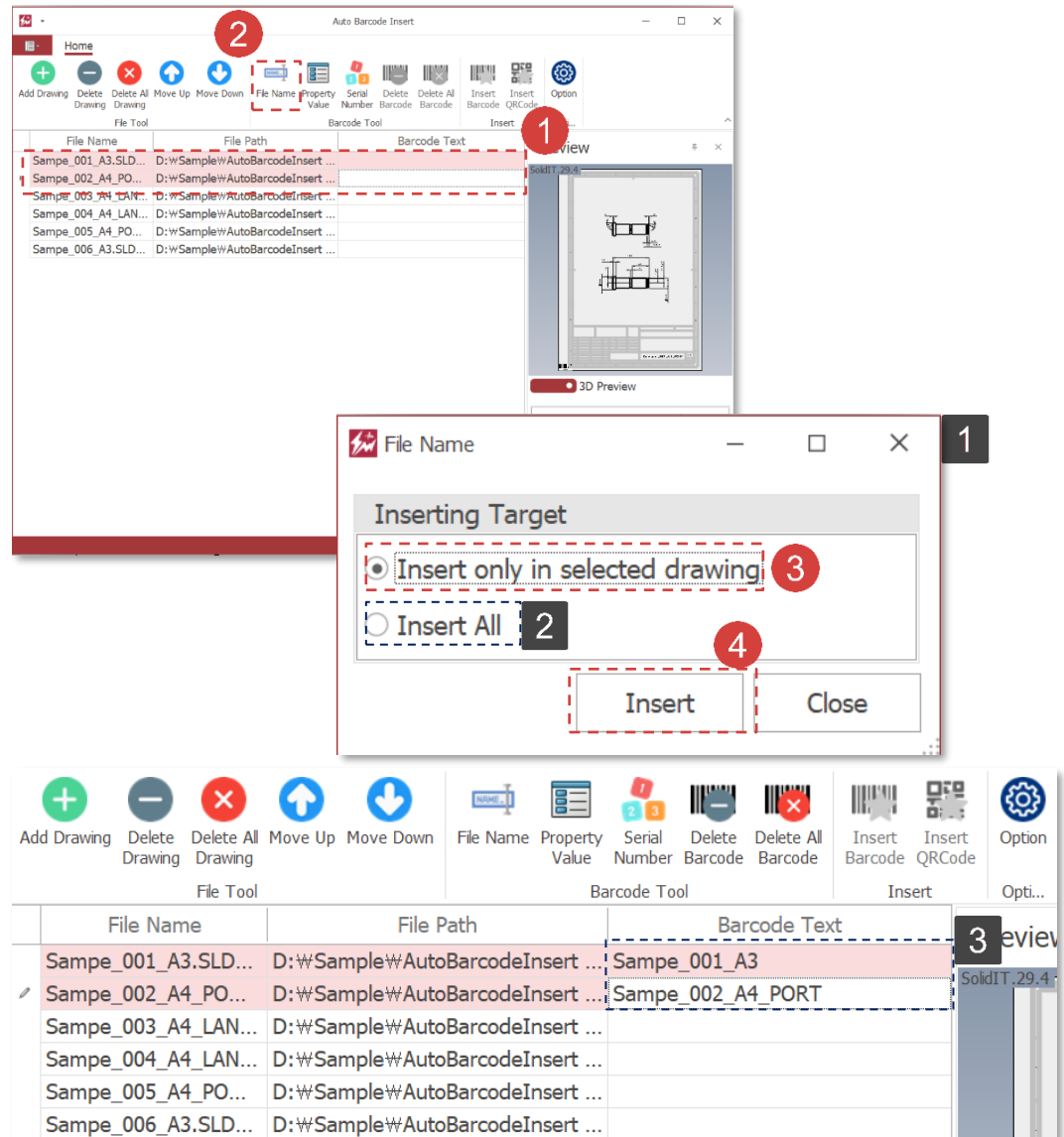


Auto Barcode Insert - Enter File Name

Work on the part with the red circle (1) following instructions by yourself.
The part with the black square (2) is an additional explanation or a reference.

- 1 Select the **Sampe_001_A3.SLDDRW**, **Sampe_002_A4_PORT.SLDDRW** files among the drawing list.
- 2 Click **[File Name]** button.
- 3 Select the **[Inserting Target] - [Insert only in selected drawing]**.
- 4 Click **[Insert]** button.

- 1 This is file name screen.
- 2 If user select **[Inserting Target] - [Insert All]**, file name is inserted into the whole barcode text.
- 3 File name is inserted into selected item's barcode text.



Auto Barcode Insert - Enter Property Values

Work on the part with the red circle (1) following instructions by yourself.
The part with the black square (1) is an additional explanation or a reference.

1 Select the **Sampe_003_A4_LAND.SLDDRW**, **Sampe_004_A4_LAND.SLDDRW** among the drawing file list.

2 Click the **[Property Value]**.

3 Insert '**PartNo**' into **[Property Name]**.

4 Select the **[Property Target]** - **[Model View Property]**.

5 Select the **[Property Type]** - **[Custom]**.

6 Select the **[Property Target]** - **[Insert only in selected drawing]**.

7 Click **[Insert]** button.

1 This is Property Value screen.

2 Select the In **[Property Target]**, select the property to import. If users selected **[Model View Property]**, load the properties of the model referenced by the view. If users selected **[Drawing Property]**, load the properties of drawing file.

3 Specific Configuration in **[Property Type]** load currently activated configuration's properties.

4 Property value are inserted into barcode text only selected items.

The screenshot shows the 'Auto Barcode Insert' software interface. The main window displays a table of drawing files with columns for File Name, File Path, and Barcode Text. A 'Property Value' dialog box is open, allowing users to configure property insertion. The dialog box has fields for Property Name, Property Target, and Property Type, along with an 'Inserting Target' section and 'Insert' and 'Close' buttons.

Property Value Dialog Box:

- Property Name:** PartNo
- Property Target:** Model View Property
- Property Type:** Custom
- Inserting Target:** Insert only in selected drawing
- Buttons:** Insert, Close

Main Drawing List Table:

File Name	File Path	Barcode Text
Sampe_001_A3.SLD...	D:\Sample\AutoBarcodeInsert ...	Sampe_001_A3
Sampe_002_A4_PO...	D:\Sample\AutoBarcodeInsert ...	Sampe_002_A4_PORT
Sampe_003_A4_LAN...	D:\Sample\AutoBarcodeInsert ...	0315 02005-11
Sampe_004_A4_LAN...	D:\Sample\AutoBarcodeInsert ...	0301 05070-02
Sampe_005_A4_PO...	D:\Sample\AutoBarcodeInsert ...	
Sampe_006_A3.SLD...	D:\Sample\AutoBarcodeInsert ...	

Auto Barcode Insert - Enter Serial Number

Work on the part with the red circle (1) following instructions by yourself.
The part with the black square (1) is an additional explanation or a reference.

- 1 Select **Sampe_005_A4_PORT.SLDDRW**, **Sampe_006_A3.SLDDRW** among the drawing list.
- 2 Click **[Serial Number]** button.
- 3 Insert '1' into **[Starting Number]**.
- 4 Enter 'ABC#####' into **[Serial Number Rule]**.
- 5 Select the **[Inserting Target]** - **[Insert only in selected drawing]**.
- 6 Click **[Insert]** button.

1 This is Serial Number Screen.

2 '#' is the position of number would be entered in **[Serial Number Rule]**. If the number of '#' is less than **[Starting Number]**, then filled with '0' front of number.

3 Serial Number are inserted into barcode text only selected items.

The screenshot shows the 'Auto Barcode Insert' software interface. The main window displays a list of files with columns for File Name, File Path, and Barcode Text. A red dashed box highlights the 'Serial Number' button in the top toolbar, labeled with a red circle '2'. Another red dashed box highlights the 'Sampe_005_A4_PORT.SLDDRW' and 'Sampe_006_A3.SLDDRW' rows in the file list, labeled with a red circle '1'. A 'Serial Number' dialog box is open, showing the 'Starting Number' field with '1' (labeled with a red circle '3'), the 'Numbering Rule' field with 'ABC#####' (labeled with a red circle '4'), and the 'Inserting Target' section with 'Insert only in selected drawing' selected (labeled with a red circle '5'). The 'Insert' button is labeled with a red circle '6'. A black square '1' is in the top right corner of the dialog box. Below the dialog box, the main window shows the updated barcode text for the selected files, with 'ABC000001' and 'ABC000002' (labeled with a black square '3') inserted into the 'Barcode Text' column.

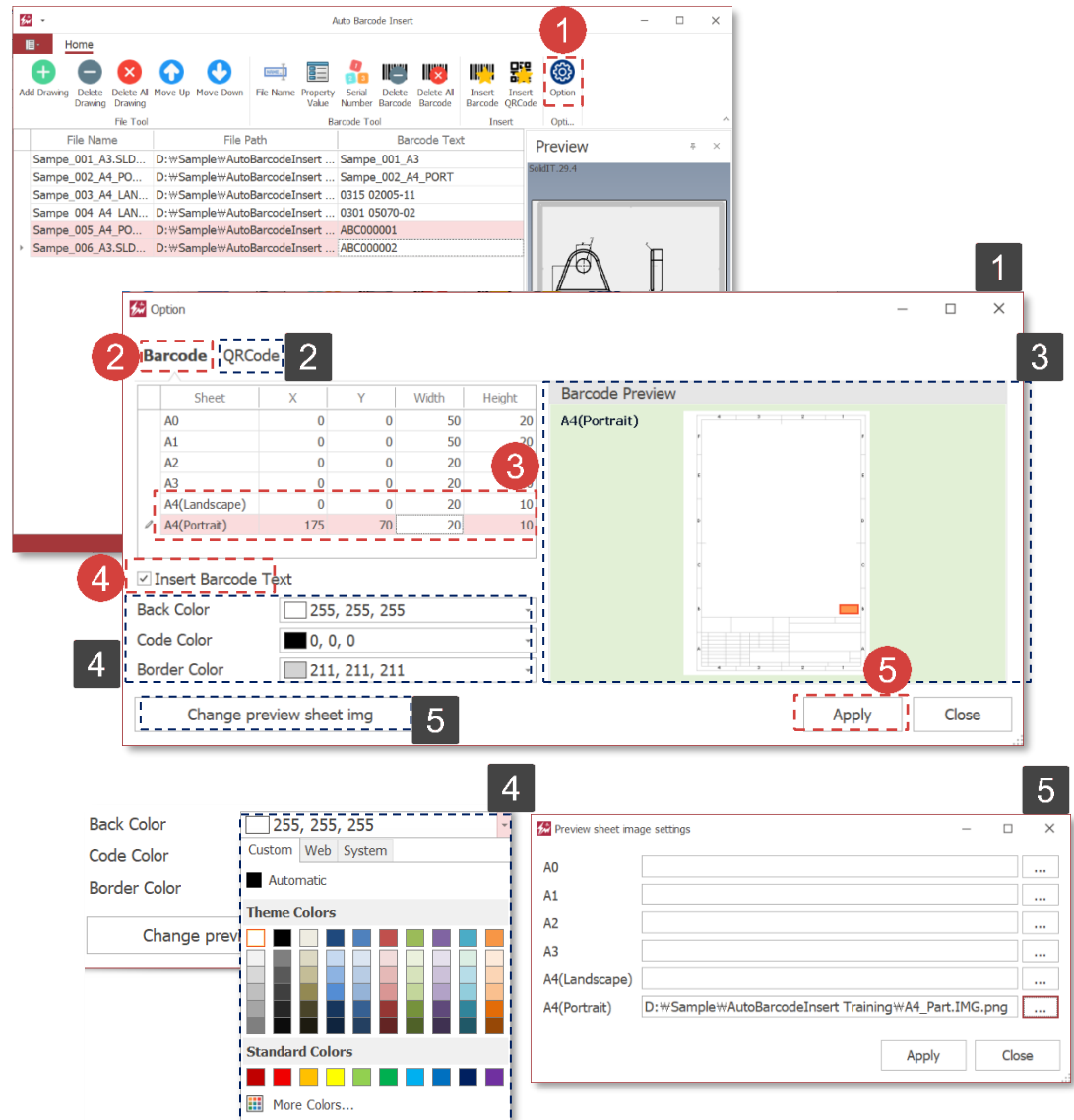
File Name	File Path	Barcode Text
Sampe_001_A3.SLD...	D:\Sample\AutoBarcodeInsert ...	Sampe_001_A3
Sampe_002_A4_PO...	D:\Sample\AutoBarcodeInsert ...	Sampe_002_A4_PORT
Sampe_003_A4_LAN...	D:\Sample\AutoBarcodeInsert ...	0315 02005-11
Sampe_004_A4_LAN...	D:\Sample\AutoBarcodeInsert ...	0301 05070-02
Sampe_005_A4_PO...	D:\Sample\AutoBarcodeInsert ...	ABC000001
Sampe_006_A3.SLD...	D:\Sample\AutoBarcodeInsert ...	ABC000002

Auto Barcode Insert - Option Setting

Work on the part with the red circle (1) following instructions by yourself.
The part with the black square (2) is an additional explanation or a reference.

- 1 Click **[Option]** button.
- 2 Select the **[Barcode]** tab.
- 3 Enter the barcode parameters as shown below.
A3 - X: 370, Y: 70, Width: 30, Height: 10
A4(Landscape) - X: 260, Y: 70, Width: 20, Height: 10
A3(Portrait) - X: 175, Y: 70, Width: 20, Height: 10
- 4 Check the **[Insert Barcode Text]**.
- 5 Click **[Apply]** button.

- 1 This is Option screen.
- 2 Users can specify QR Code option.
- 3 Through **[Barcode Preview]**, users can check and specify barcode position.
- 4 User can change barcode color.
- 5 Sheet image that displayed into preview are able to change.

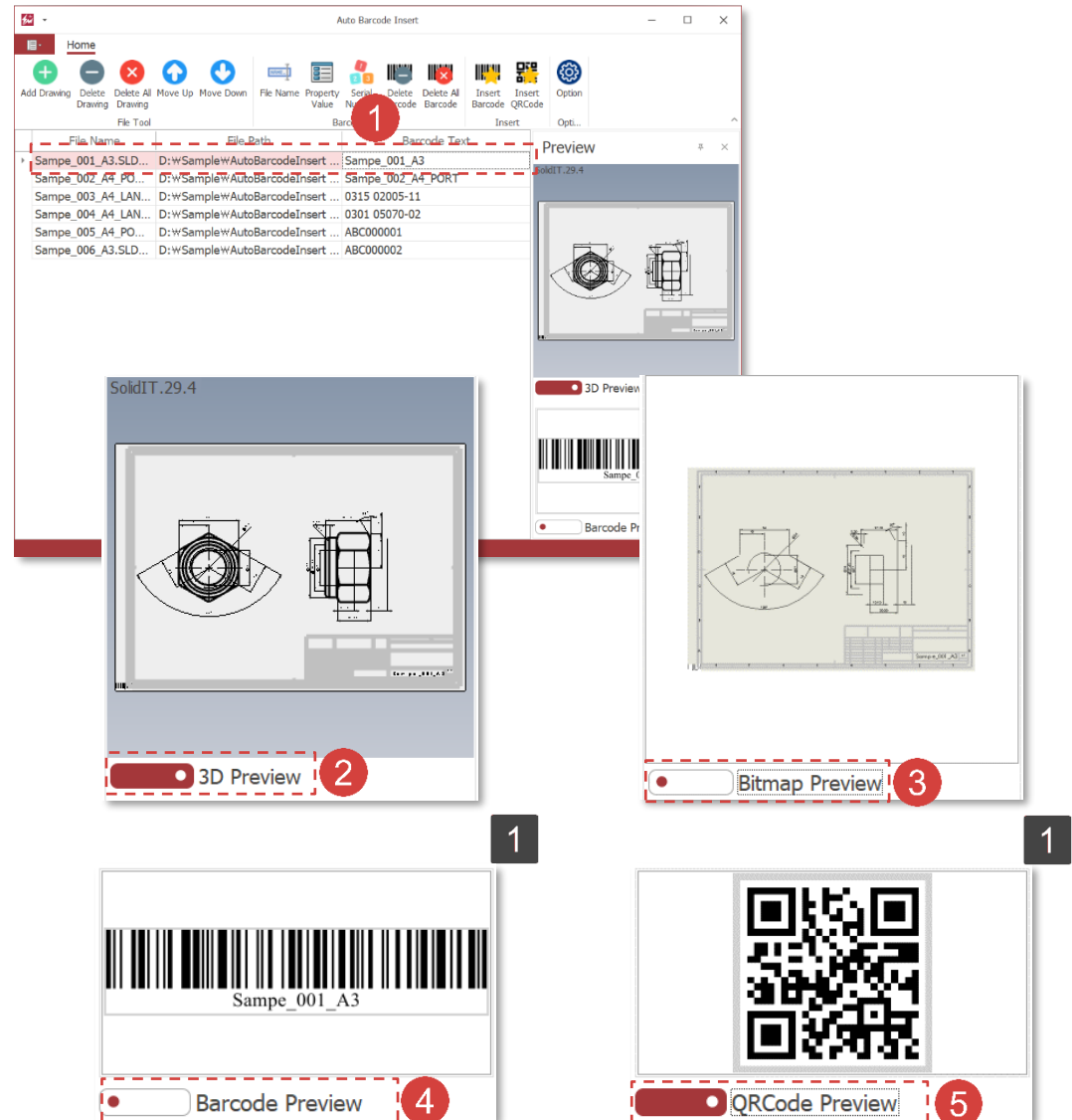


Auto Barcode Insert - Preview

Work on the part with the red circle (1) following instructions by yourself.
The part with the black square (1) is an additional explanation or a reference.

- 1 Select the first item of drawing list.
- 2 Set to [3D Preview].
- 3 Set to [Bitmap Preview].
- 4 Set to [Barcode Preview].
- 5 Set to [QR Code Preview].

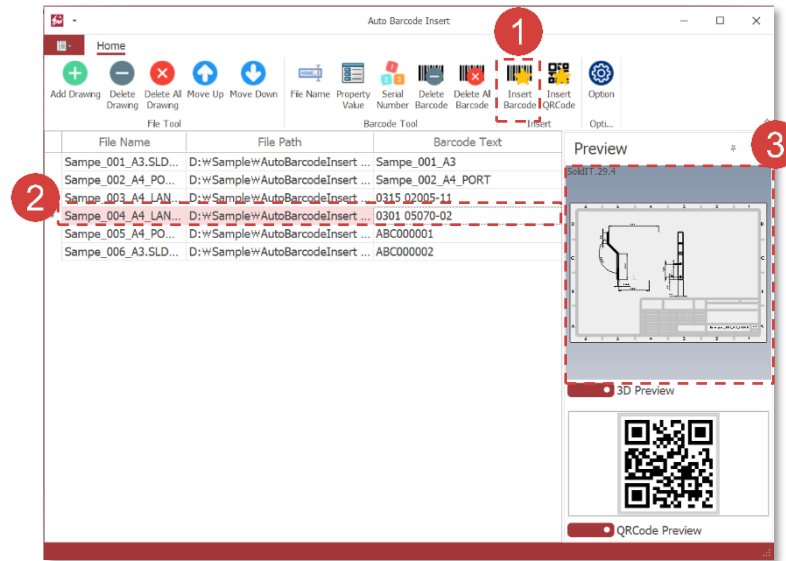
1 It is displayed with the barcode/QR code setting set in the options.



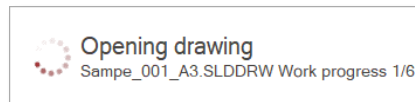
Auto Barcode Insert - Insert Barcode

Work on the part with the red circle (1) following instructions by yourself.
The part with the black square (1) is an additional explanation or a reference.

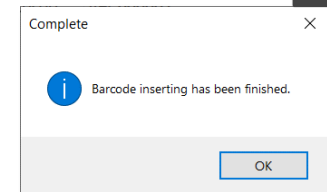
- 1 Click the **[Insert Barcode]** button.
- 2 After completing the work, select the drawing list.
- 3 Check the completion status through **[3D Preview]**.



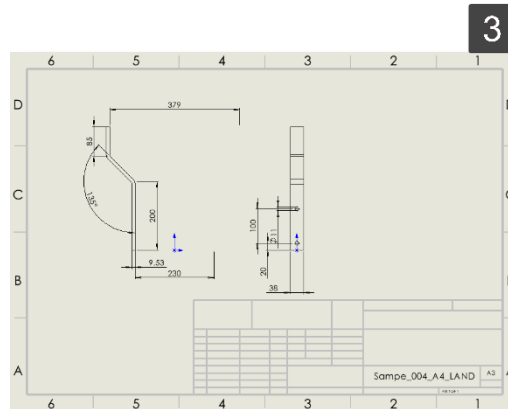
- 1 User can check the status of the barcode insertion operation.



- 2 When the operation is complete, a completion message window appears.



- 3 Drawing result before barcode inserting



- 4 Drawing result after inserting barcode

