

# Component Separation Training

Component Separation\_Training.zip



# Component Separation - Overview

Work on the part with the red circle (1) following instructions by yourself.  
The part with the black square (1) is an additional explanation or a reference.



## Main Functions

- Save and replace the reference files used in an assembly to the copies
- Replaces the same component selectively
- Make a reference between separated components and copy drawing

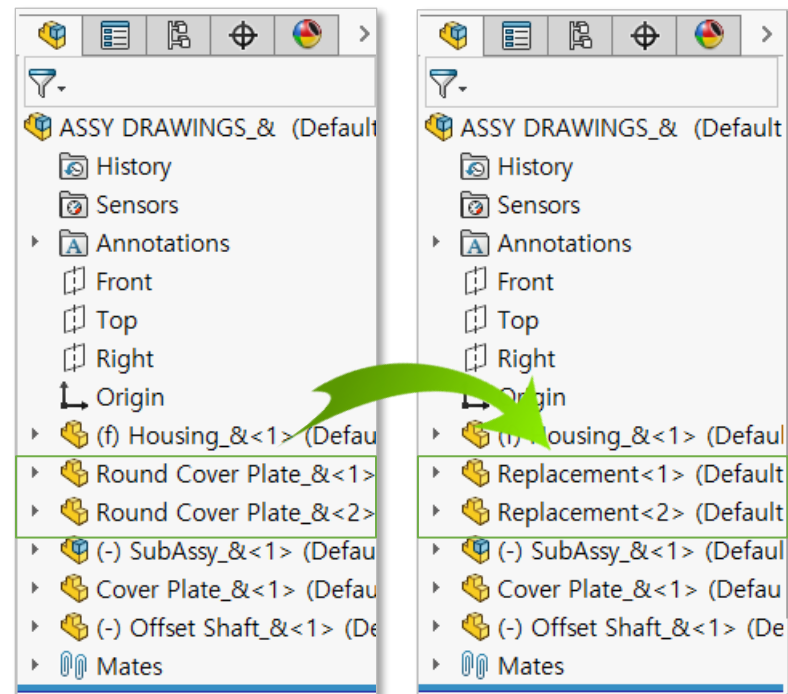
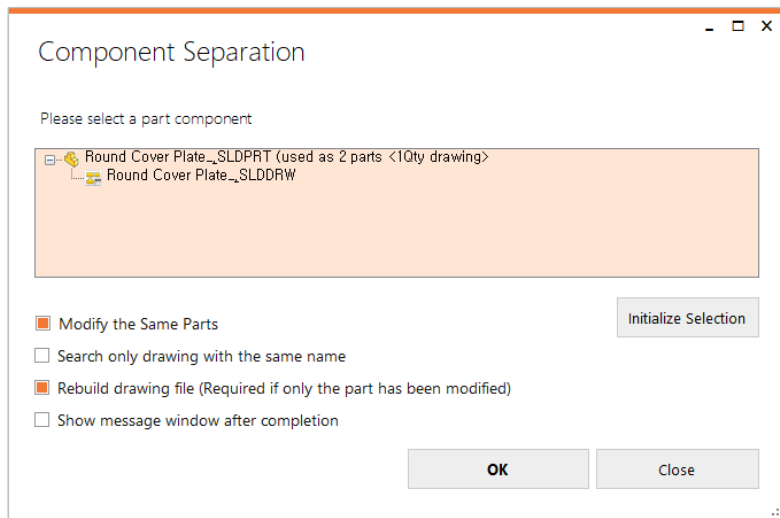


## Benefits

- Works efficiently as copying and replacing a component at once
- Prevents human errors as automatically making a reference separation
- Improve usability of existing project files



**Course Objective: Follow instructions through the course and learn how to use Component Separation.**

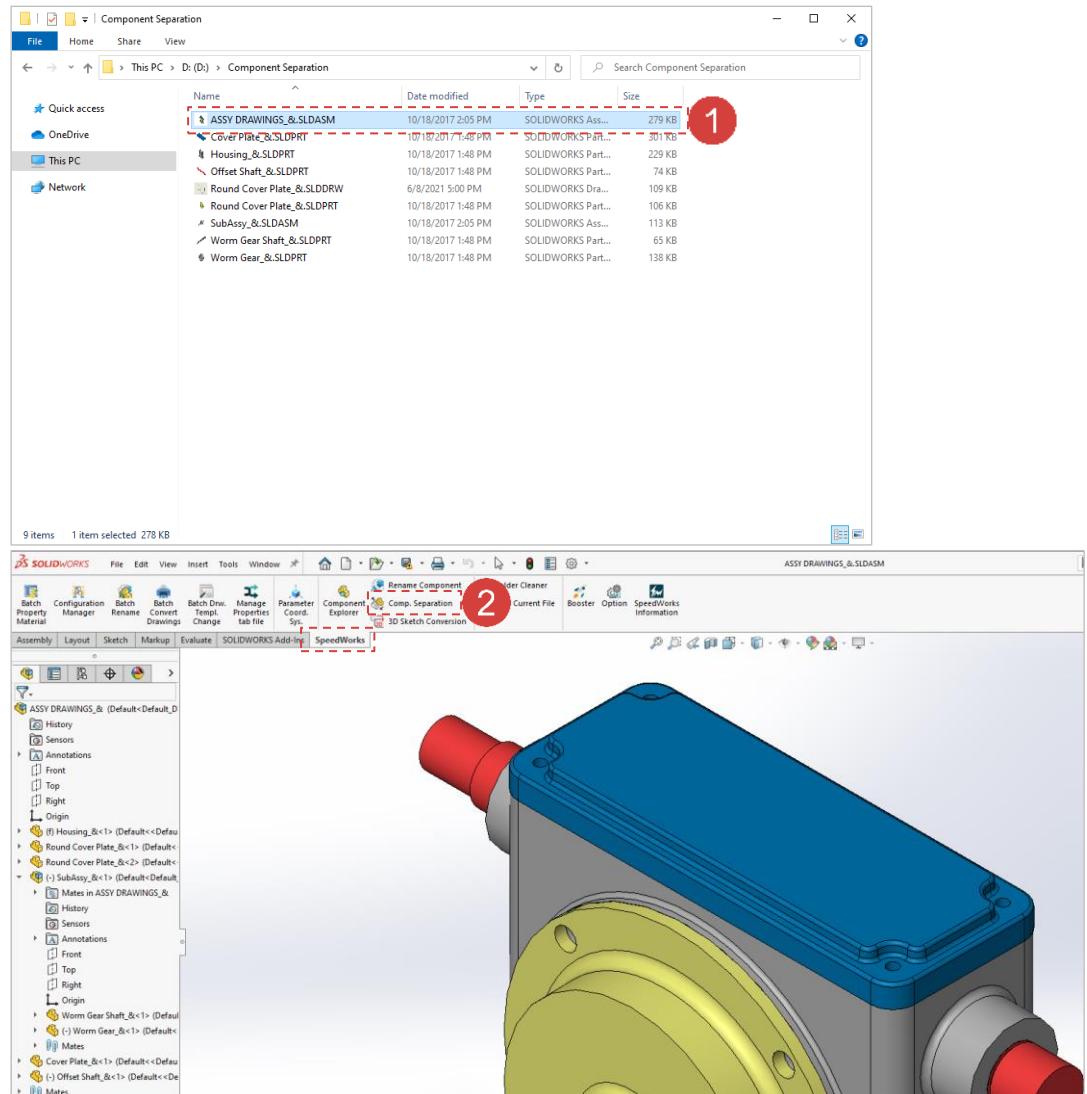


## Component Separation - Execute

Work on the part with the red circle (1) following instructions by yourself.  
The part with the black square (1) is an additional explanation or a reference.

1 Execute **ASSY DRAWINGS\_&.SLDASM** file among component separation training example files.

2 Click **[SpeedWorks]tab - [Component Separation]** button to run the tool.

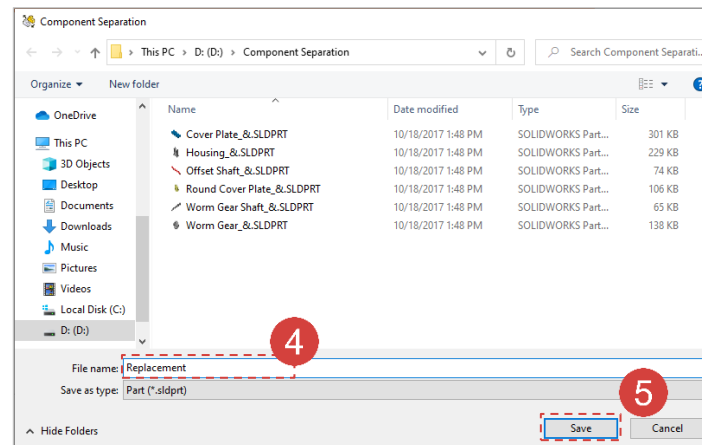
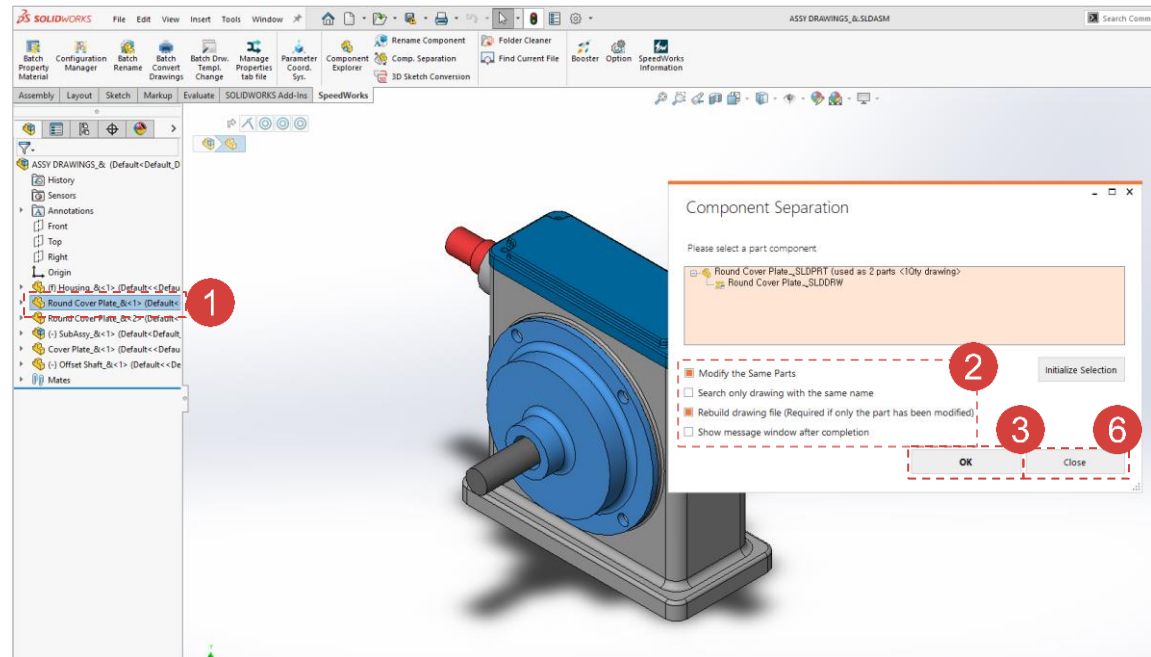


※ You can download example files at Support page in SpeedWorks Homepage(<http://speedworks.info>).

## Component Separation - Run Component Separation

Work on the part with the red circle (1) following instructions by yourself.  
The part with the black square (1) is an additional explanation or a reference.

- 1 Once Component Separation runs, select **Round Cover Plate\_&** part.
- 2 Check **[Batch modification of the same part]** and **[Rebuild drawing file(Required if only the part has been modified)]**.
- 3 Click **[OK]** button.
- 4 Type **Replacement** as the name of file that will be created.
- 5 Click **[Save]** button.
- 6 Once it is completely saved, click **[Close]** button to close the window.



## Component Separation - Edit Output

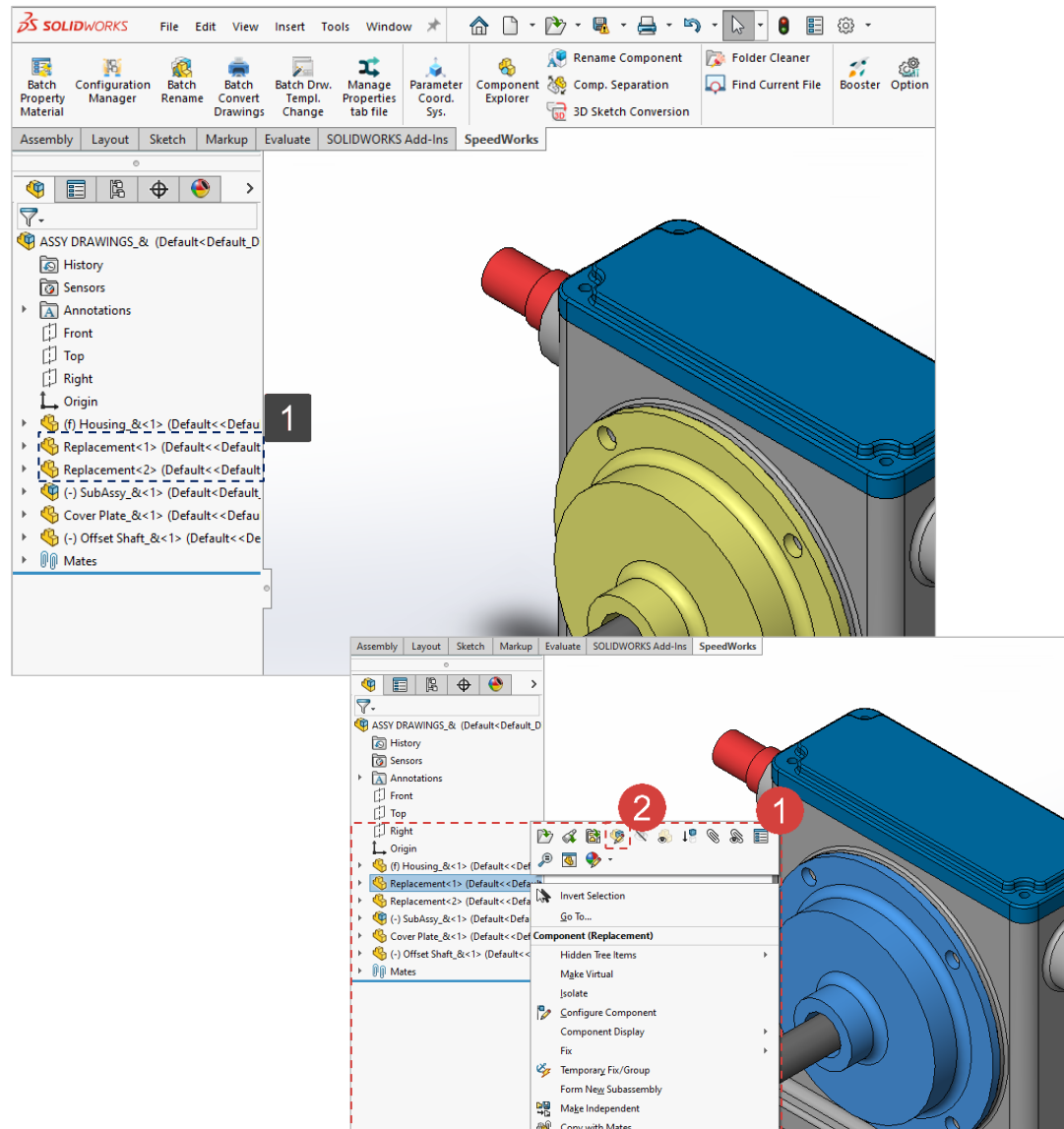
Work on the part with the red circle (1) following instructions by yourself.  
The part with the black square (1) is an additional explanation or a reference.

1 Right-click on **Replacement** component.

(Instance ID is irrelevant)

2 Click **[Edit Part]** button.

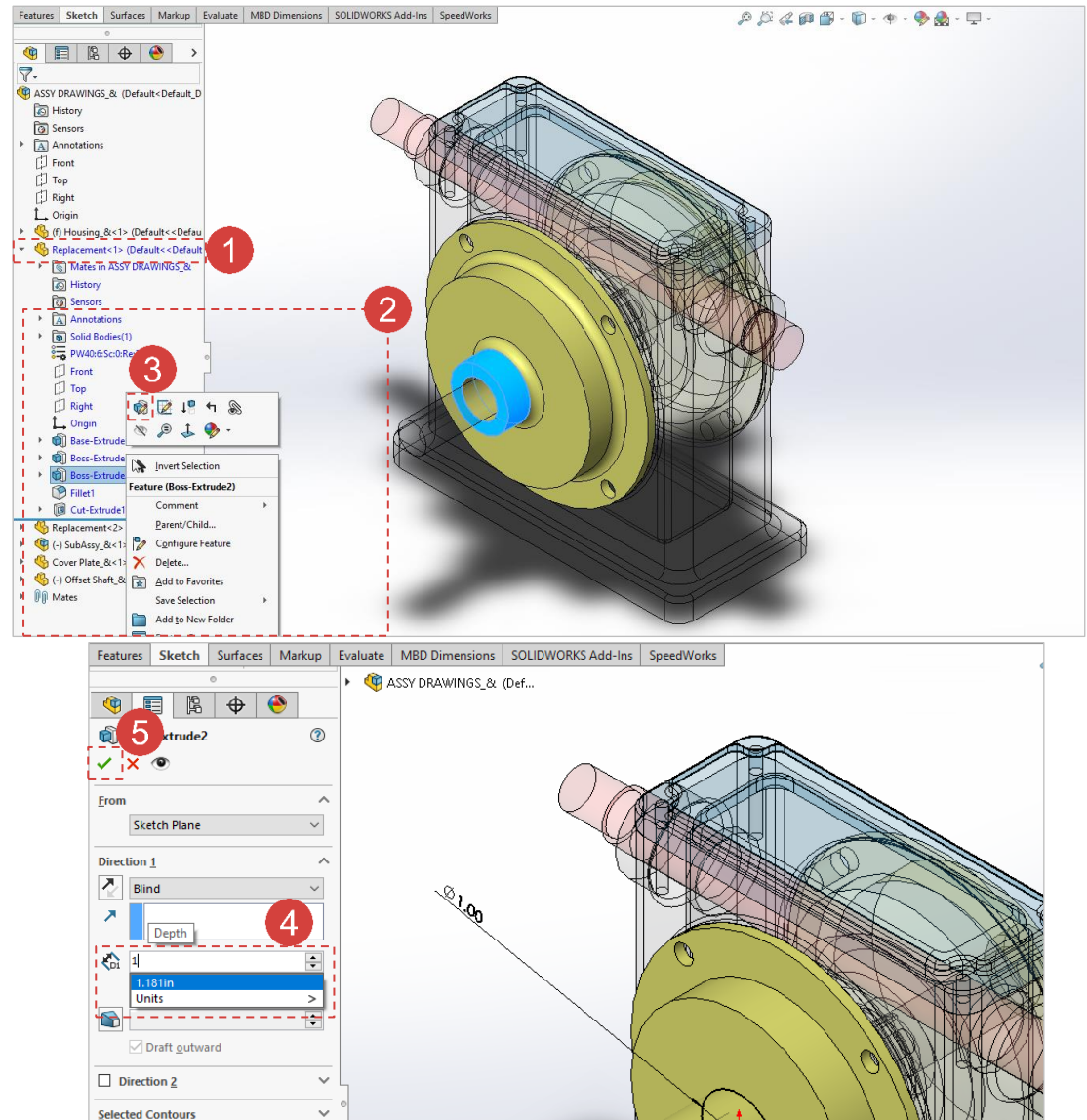
1 The part has been replaced to **Replacement**. As the same component has been used twice, two components are both replaced to **Replacement**.



## Component Separation - Edit Output2

Work on the part with the red circle (1) following instructions by yourself.  
The part with the black square (1) is an additional explanation or a reference.

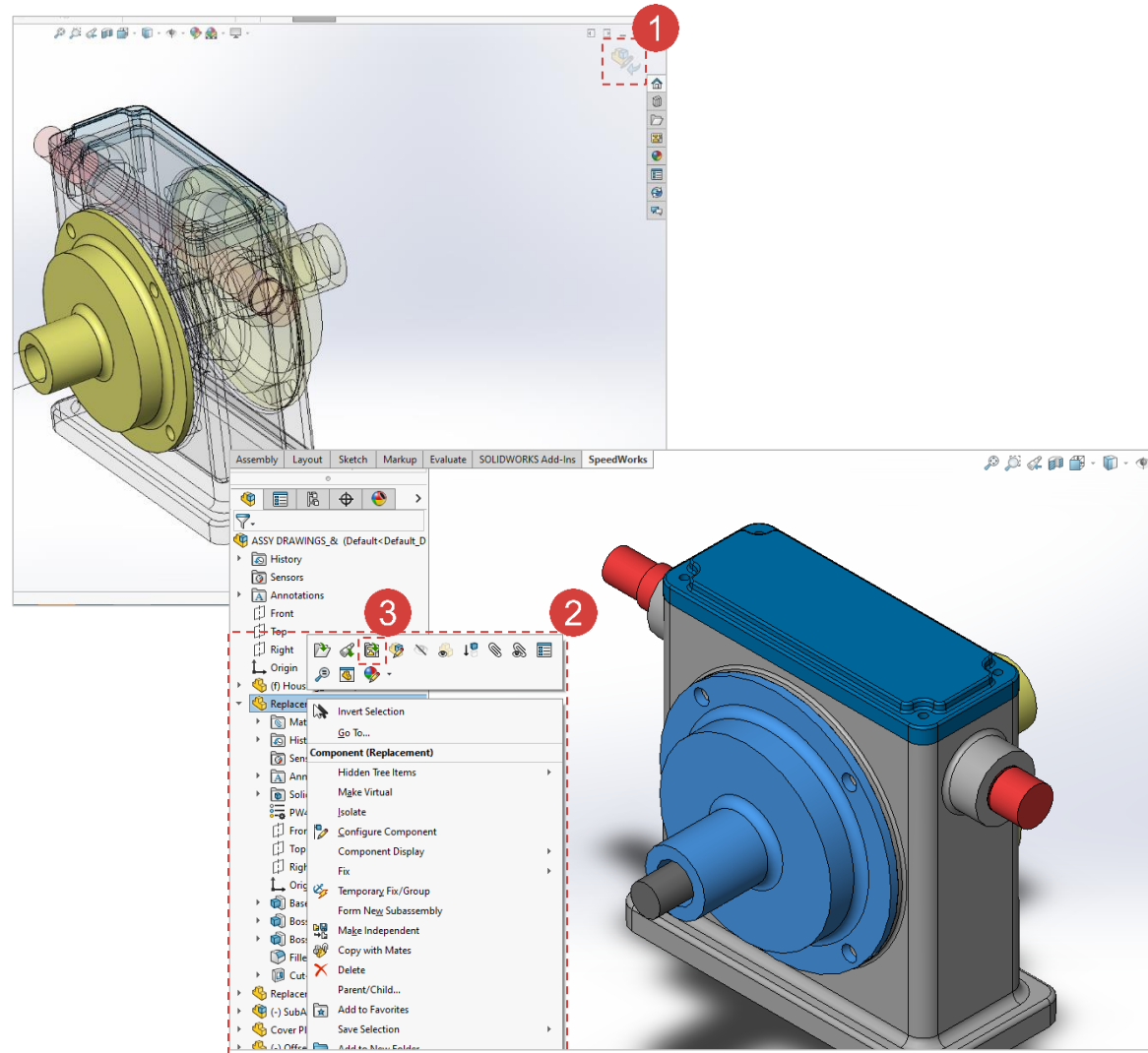
- 1 Click [▼] at the left side of **Replacement<1>**.
- 2 Right-click on **Boss-Extrude2**.
- 3 Click **Edit Feature** button.
- 4 Modify **[Extrude Depth]** as '1 inch'.
- 5 Click **[OK]** button to apply the change.



## Component Separation - Review Copy Drawing

Work on the part with the red circle (1) following instructions by yourself.  
The part with the black square (1) is an additional explanation or a reference.

- 1 Click **[End Edit Part]** button.
- 2 Select and right-click on **Replacement <1>** to activate the menu window.
- 3 Click **[Open Drawing]** button.



## Component Separation - Review Copy Drawing2

Work on the part with the red circle (1) following instructions by yourself.  
The part with the black square (1) is an additional explanation or a reference.

- 1 The extrude depth of the drawing referring the part has also been changed to 1 inch as follows.

