

Configuration Manager Training

Configuration Manager_Training.zip



Configuration Manager - Overview

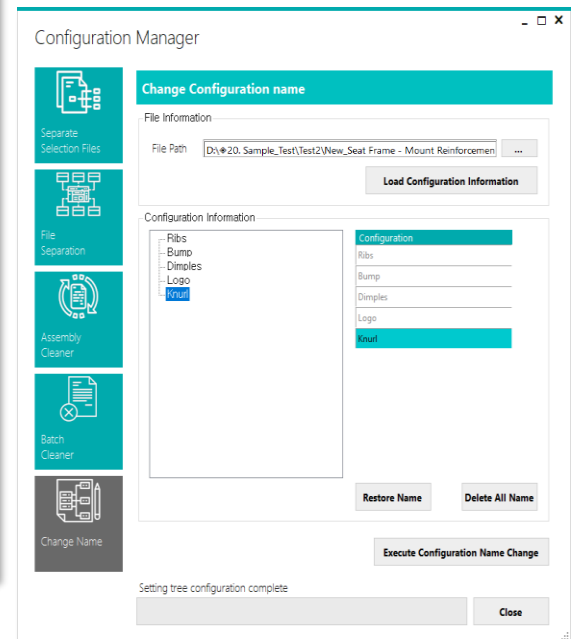
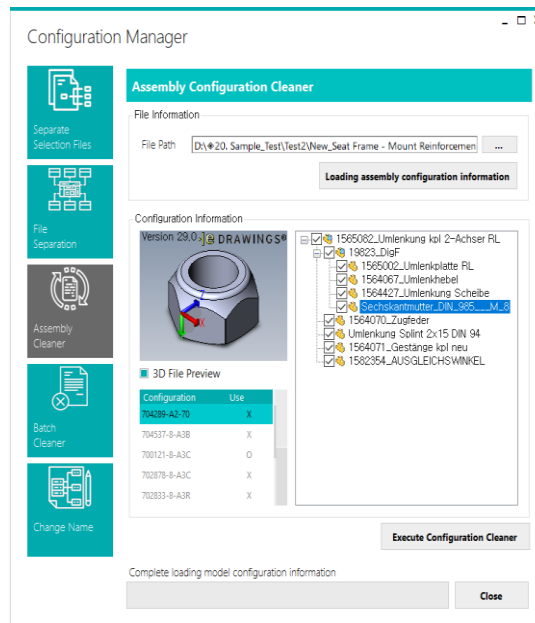
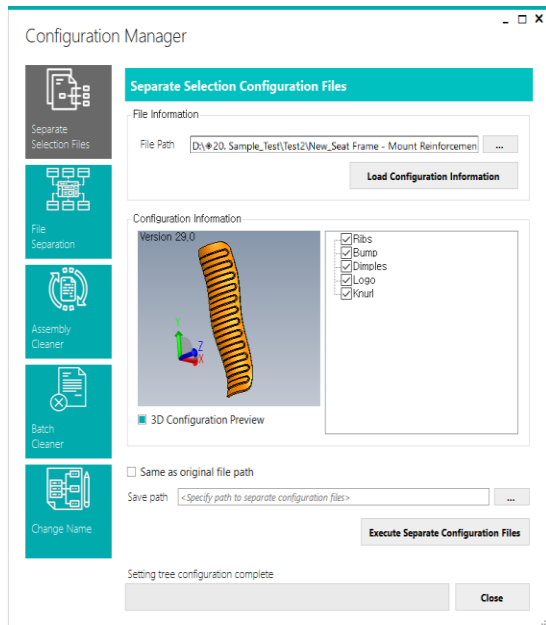
Main Functions

- Save configuration as individual model files
- Delete configuration except activated configuration
- Rename configuration names in a single operation.

Benefits

- Delete unnecessary configuration for fast loading
- Manage configuration names as a list for easy edit

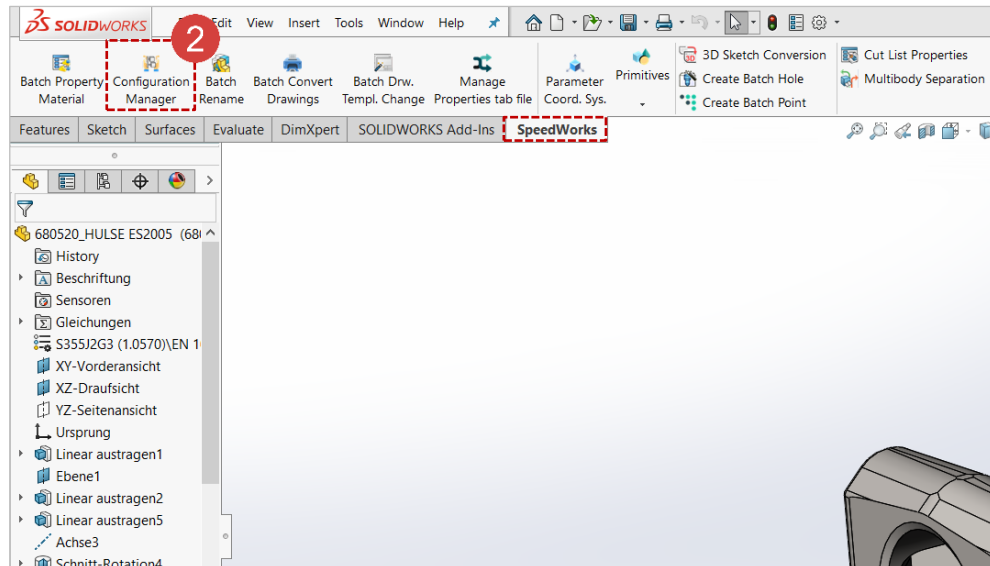
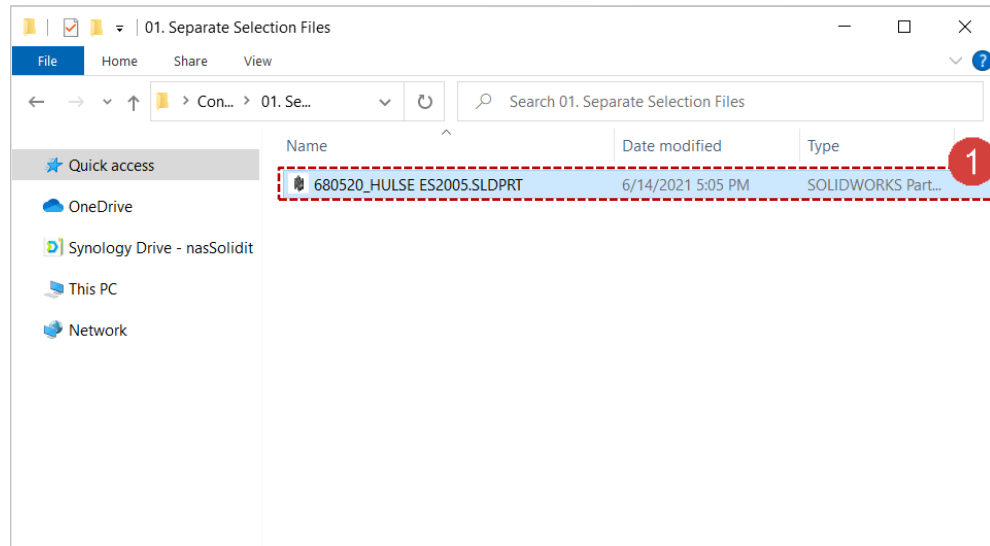
Course Objective: Follow instructions through the course and learn how to use Configuration Manager.



Configuration Manager - Execute

Work on the part with the red circle (1) following instructions by yourself.
The part with the black square (1) is an additional explanation or a reference.

- 1 Double-Click to run **01. Separate Selection Files/680520_HULSE ES2005 BEARBEITET 8 BOHRUNGEN.SLDPRT**
- 2 Click **[SpeedWorks]tab – [Configuration] button** to execute the tool.

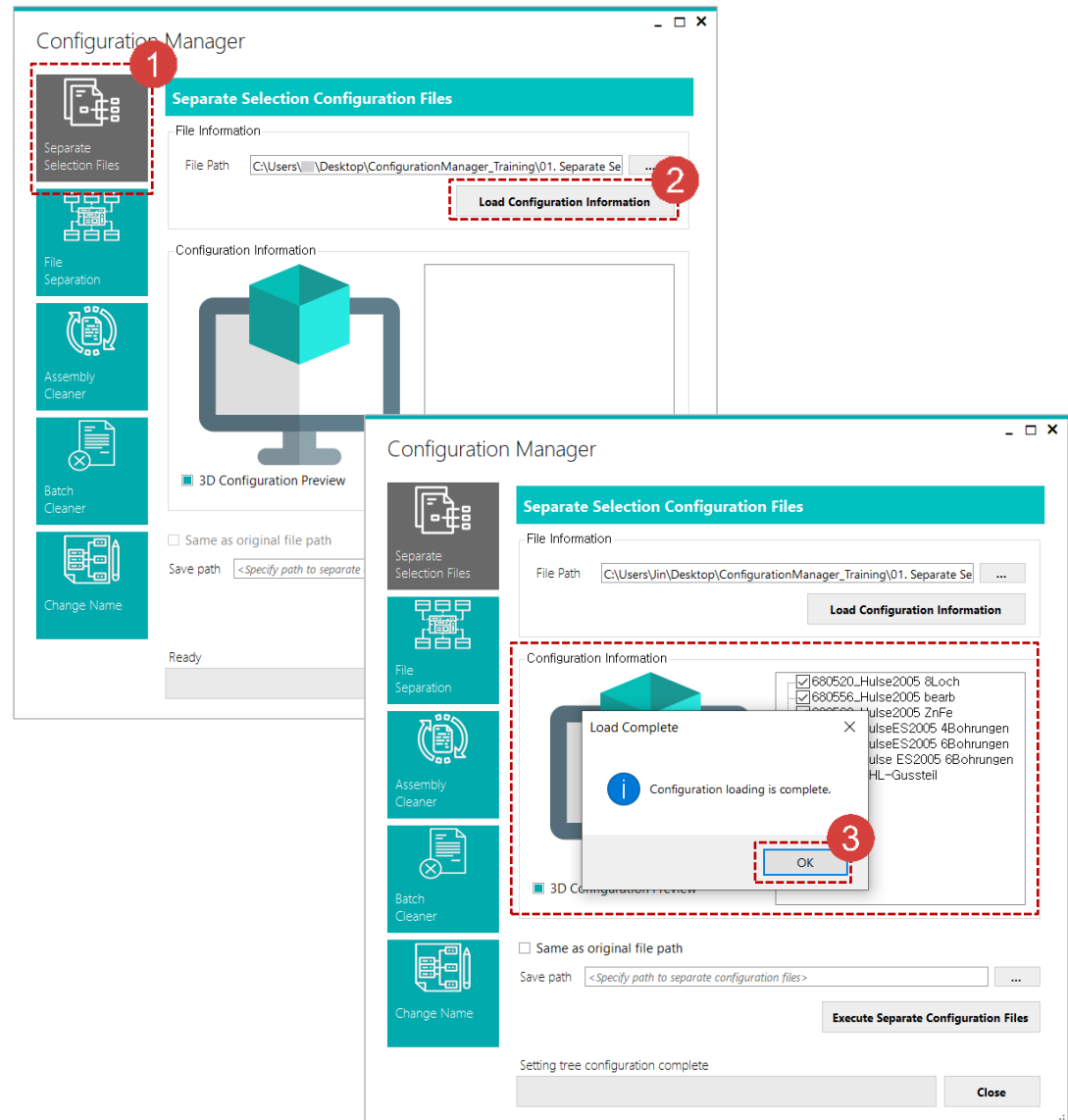


※ You can download example files at Support page in SpeedWorks Homepage(<http://speedworks.info>).

Configuration Manager - Load Configurations

Work on the part with the red circle (1) following instructions by yourself.
The part with the black square (1) is an additional explanation or a reference.

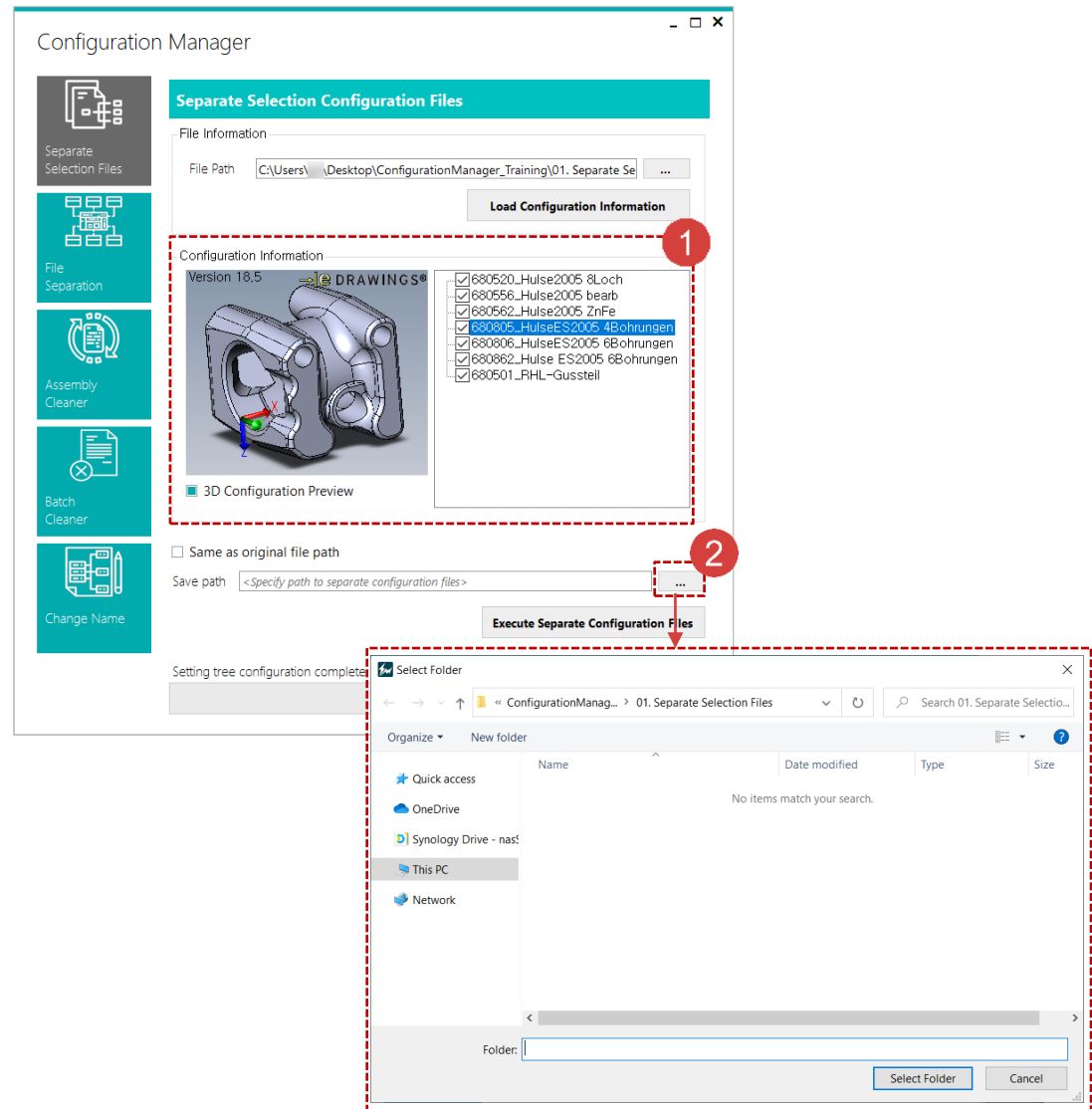
- 1 Click the **[Separate Selection Files]**. If already selected, skip this step.
- 2 Click **[Load Configuration Information]** button to load configuration information.
- 3 When loading configuration is completed, **[Load Complete]** window is displayed. Click the **[OK]** button to it.



Configuration Manager - Preview and Save path

Work on the part with the red circle (1) following instructions by yourself.
The part with the black square (1) is an additional explanation or a reference.

- 1 With checking the [3D Configuration Preview], you can preview each configuration by select each configuration.
- 2 If uncheck [Same as original file path], then [...] button beside to [Save Path] is activated. Click [...] button to designate the training folder as save path.

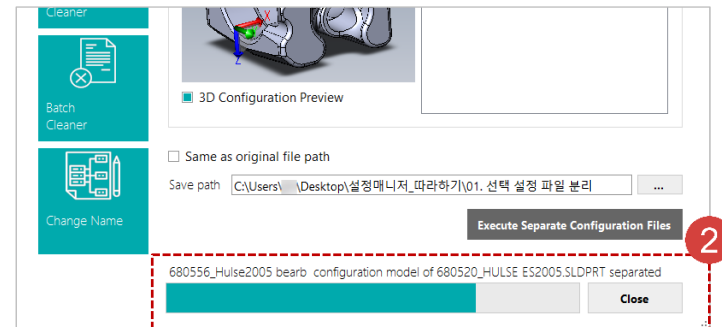
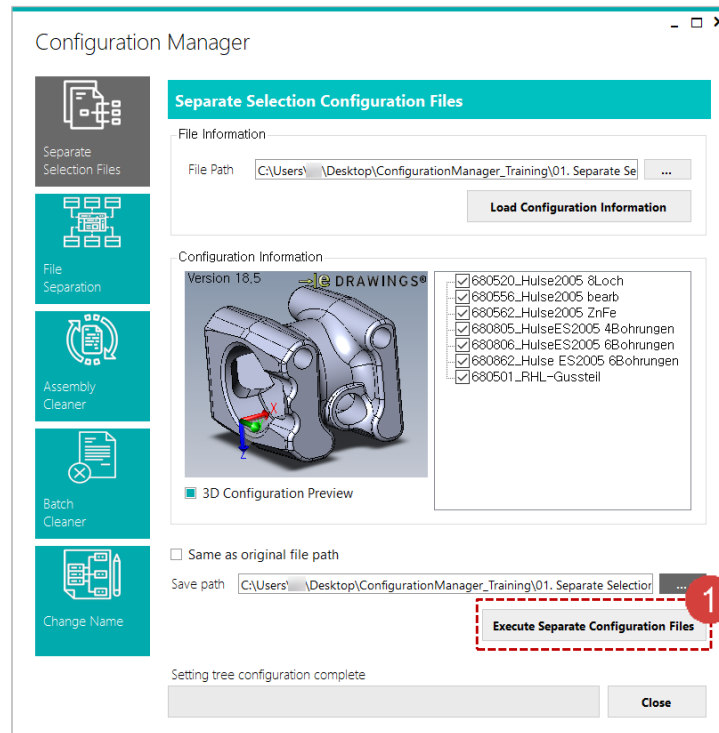


Configuration Manager - Execute Separate

Work on the part with the red circle (1) following instructions by yourself.
The part with the black square (1) is an additional explanation or a reference.

1 Click **[Execute Separate Configuration Files]** button to save each configuration as individual files.

1 When an operation is started, users can monitor progress status with the progress bar placed on the bottom of **[Configuration Manager]** window.



Configuration Manager - Result of Separation

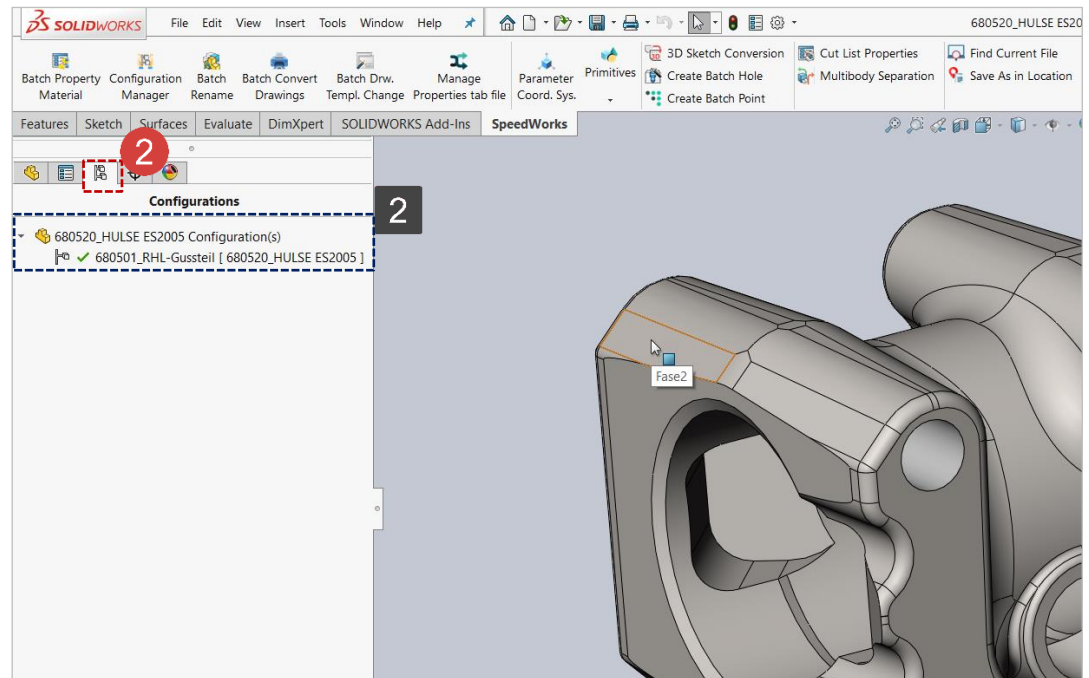
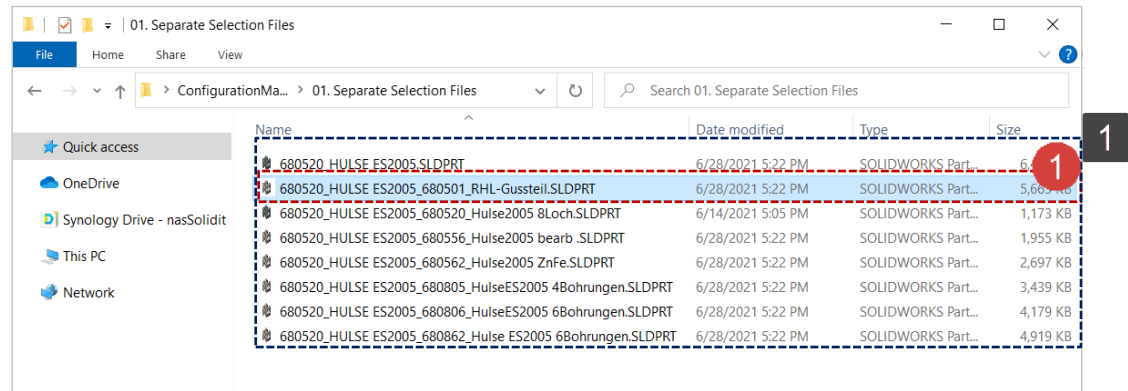
Work on the part with the red circle (1) following instructions by yourself.
The part with the black square (2) is an additional explanation or a reference.

1 Double-click **680520_HULSE**
ES2005_680501_RHL-Gussteil.SLDPRT in save path.

2 Click **[ConfigurationManager]** in menu, check configuration status.

1 Configuration has been separated. File name contains the existing part name at the end of original file name.

2 Users can check that it is saved as a single configuration file.



Configuration Manager – File Separation

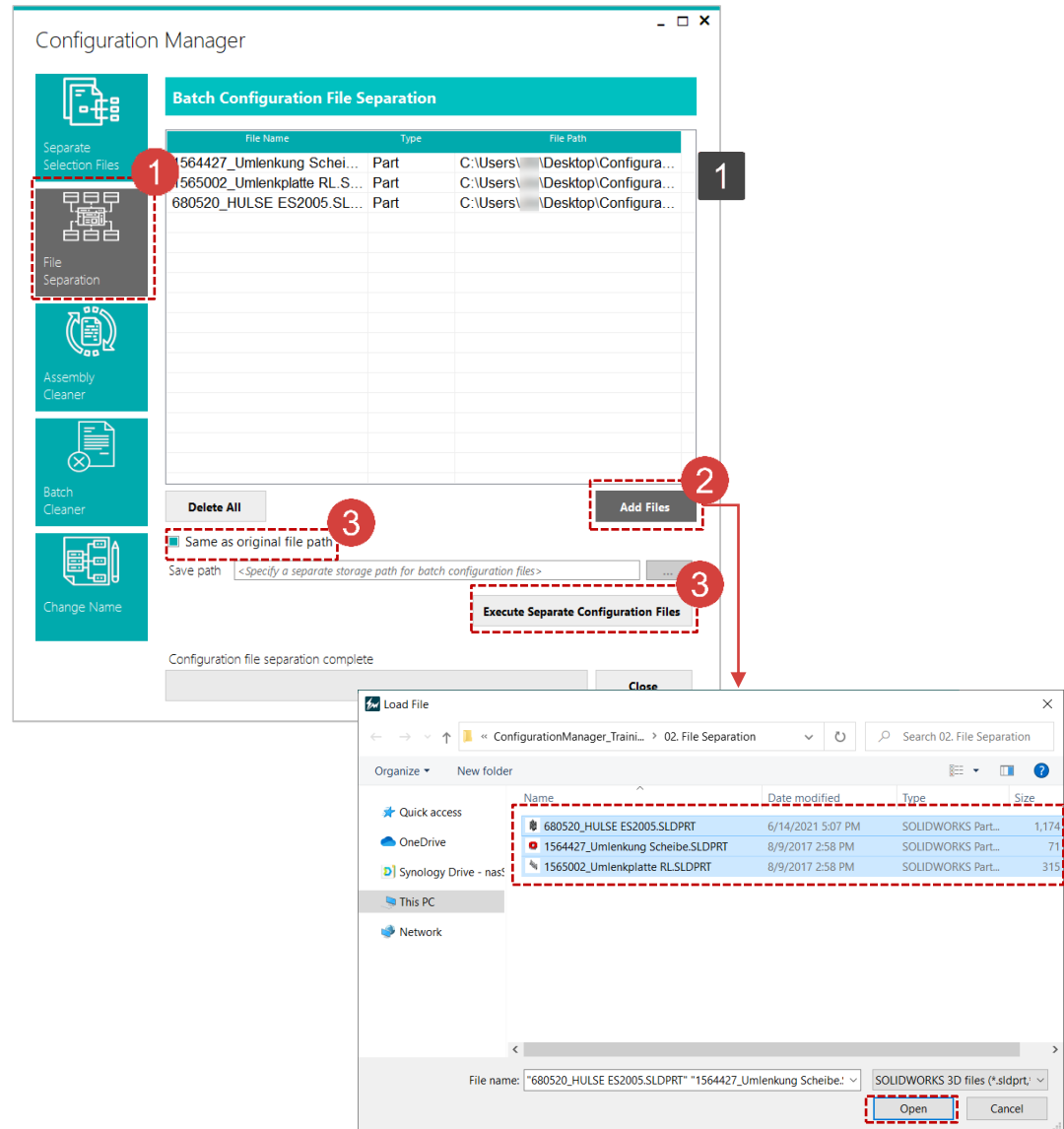
Work on the part with the red circle (1) following instructions by yourself.
The part with the black square (1) is an additional explanation or a reference.

1 **[File Separation]** is a function that batches all configuration into multiple files in the **[Separate Selection Files]** operation previously executed. Click the **[Separate Selection Files]** button.

2 Click **[Add Files]** button, select all target files in **'02. File Separation folder'**. Add target files on list by clicking **[open]** button.

3 Check **[Same as original file path]**, separate the configurations as individual files by clicking **[Execute Separate Configuration Files]** button.

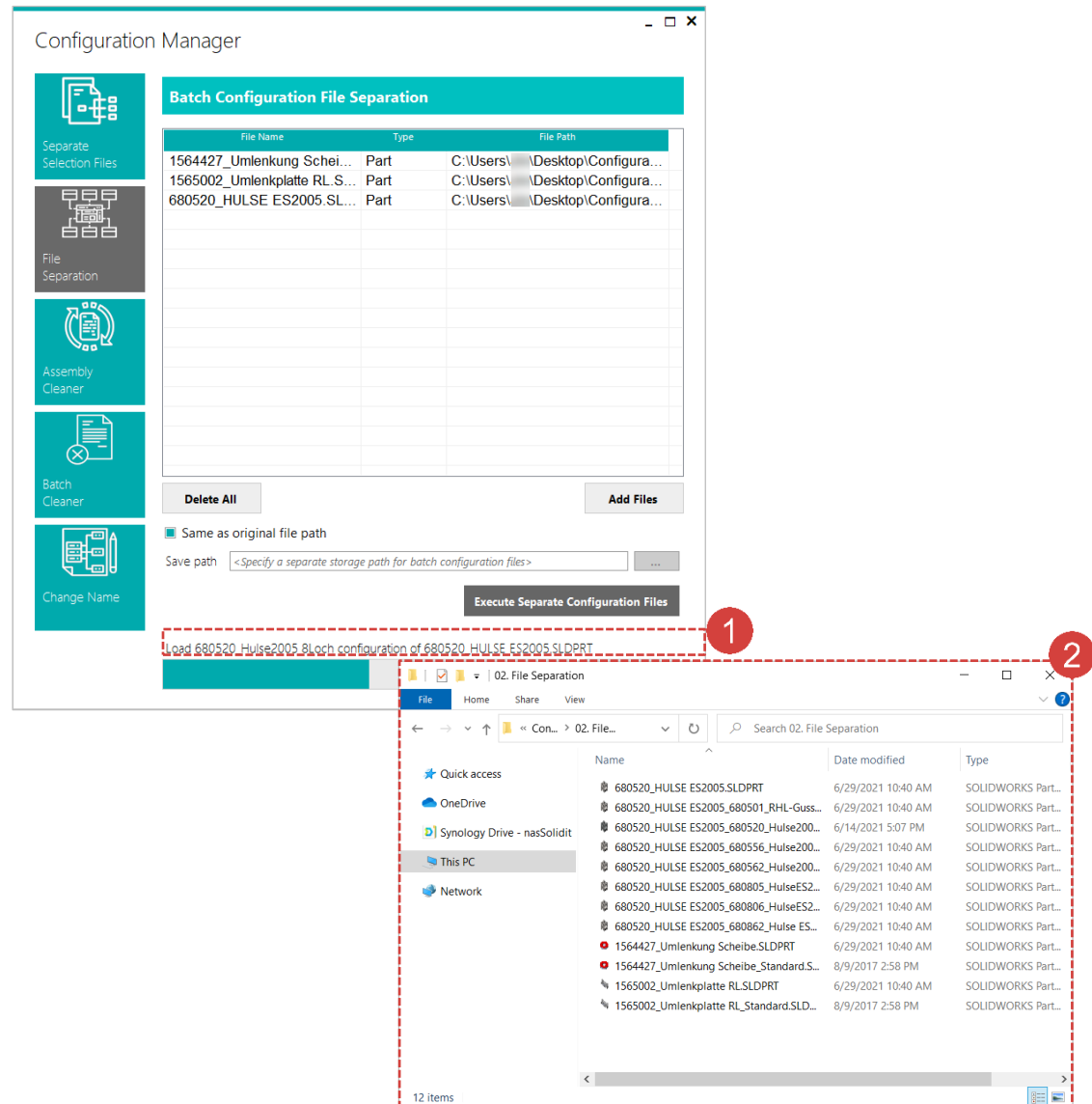
1 Users can remove target file on list by click **'Delete'** key.



Configuration Manager - File Separation Result

Work on the part with the red circle (1) following instructions by yourself.
The part with the black square (2) is an additional explanation or a reference.

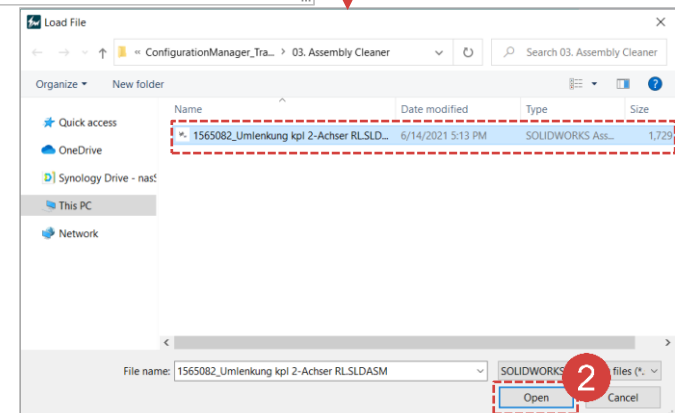
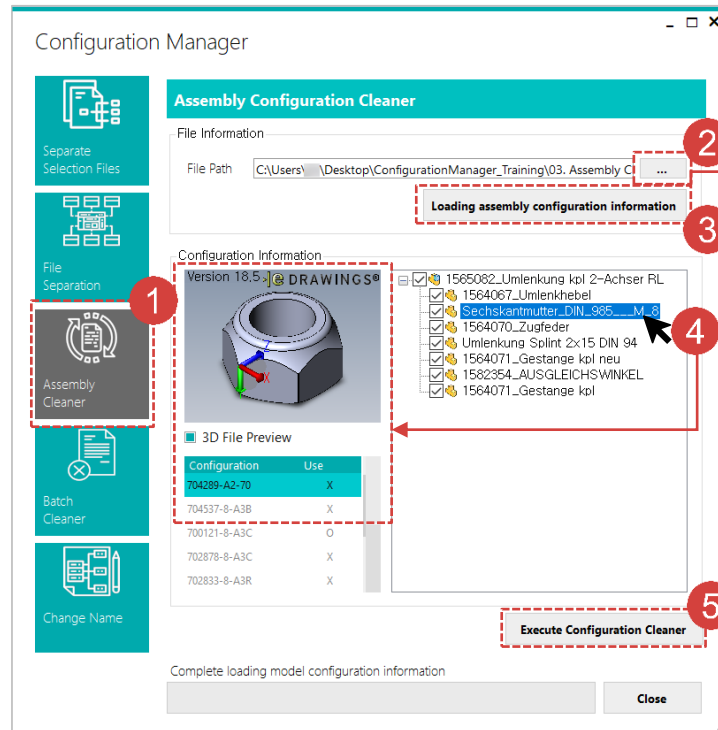
- 1 Users can monitor progress status with the progress bar placed on the bottom of [Configuration Manager] window.
- 2 Open **Configuration Manager_Training/02. File Separation folder**, users can see that the configurations of the target files are entirely separated into individual files.



Configuration Manager - Assembly Cleaner

Work on the part with the red circle (1) following instructions by yourself.
The part with the black square (1) is an additional explanation or a reference.

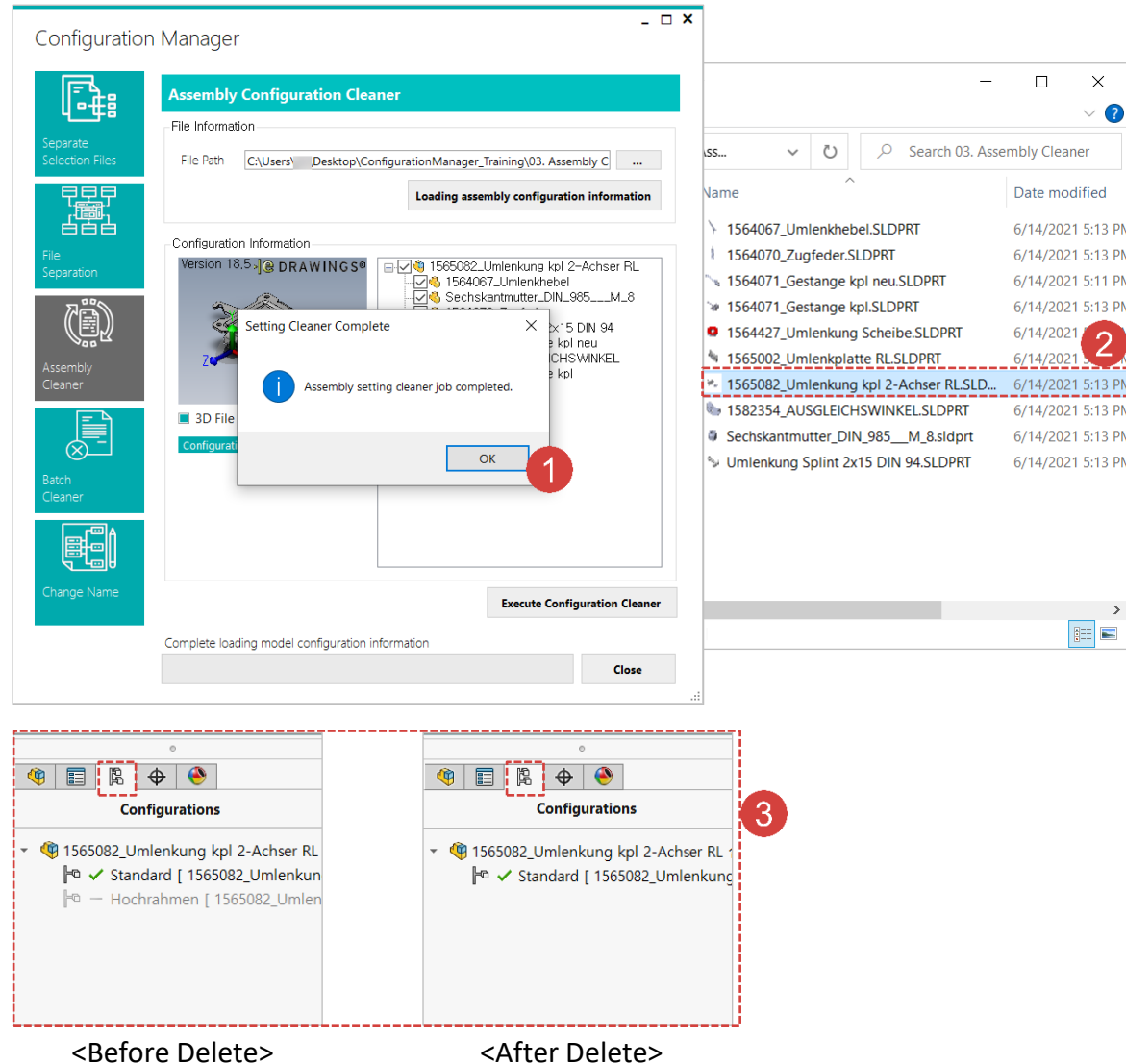
- 1 [Assembly Cleaner] is a function that delete all configuration except activated configuration. Click [Assembly Cleaner].
- 2 Click [...] button and specify 'ConfigurationManager_Training/03. Assembly Cleaner/ 1565082_Umlenkung kpl 2-Achser RL.SLDASM' as target file.
- 3 Load information of target file by clicking [Loading assembly configuration information] button.
- 4 If users select configuration on tree menu, then you can see the thumbnail image has been displayed.
- 5 Delete all of the inactivated configurations by clicking [Execute Configuration Cleaner] button.



Configuration Manager - Assembly Cleaner Result

Work on the part with the red circle (1) following instructions by yourself.
The part with the black square (1) is an additional explanation or a reference.

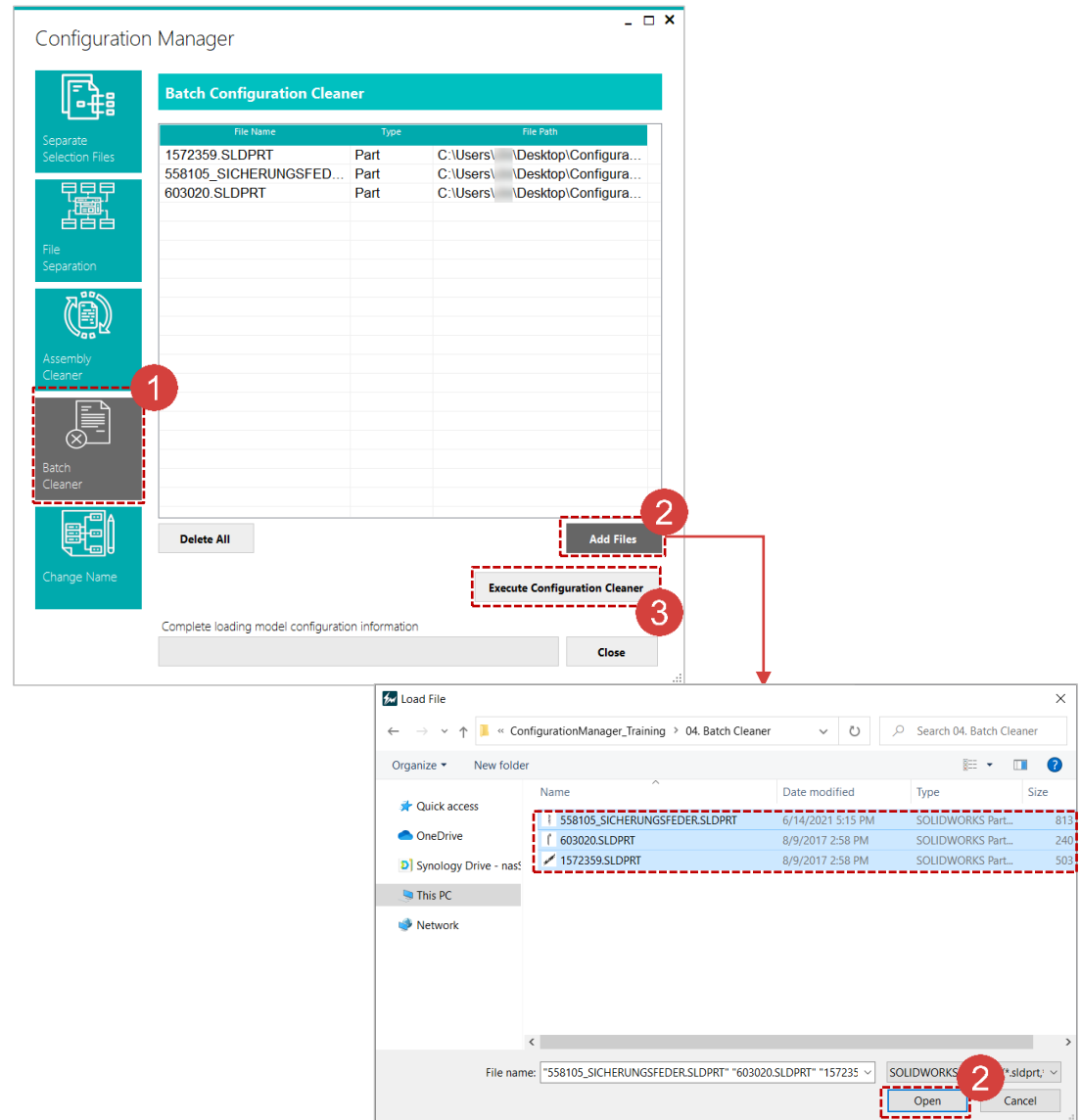
- 1 When configuration deletion is complete, a notice window is created. Click [OK] to close the window.
- 2 To check the result, open **ConfigurationManager_Training/03. Assembly Cleaner/1565082_Umlenkung kpl 2-Achser RL.SLDASM**.
- 3 Click [ConfigurationManger] in menu to check configuration is removed.



Configuration Manager - Batch Cleaner

Work on the part with the red circle (1) following instructions by yourself.
The part with the black square (1) is an additional explanation or a reference.

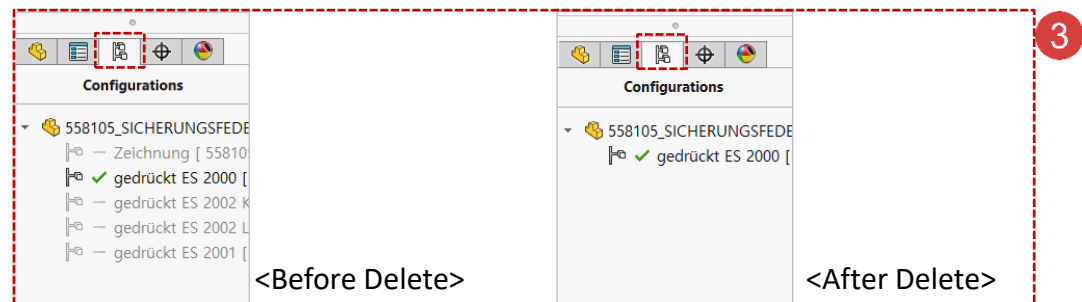
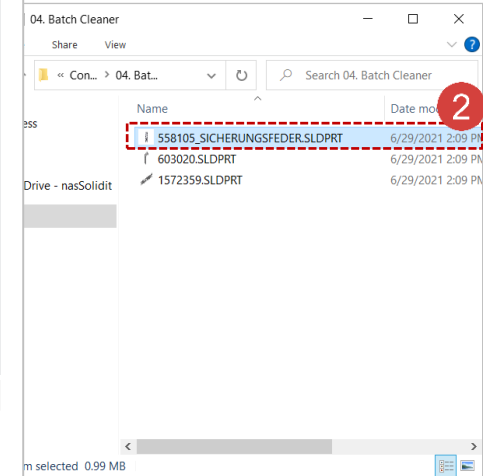
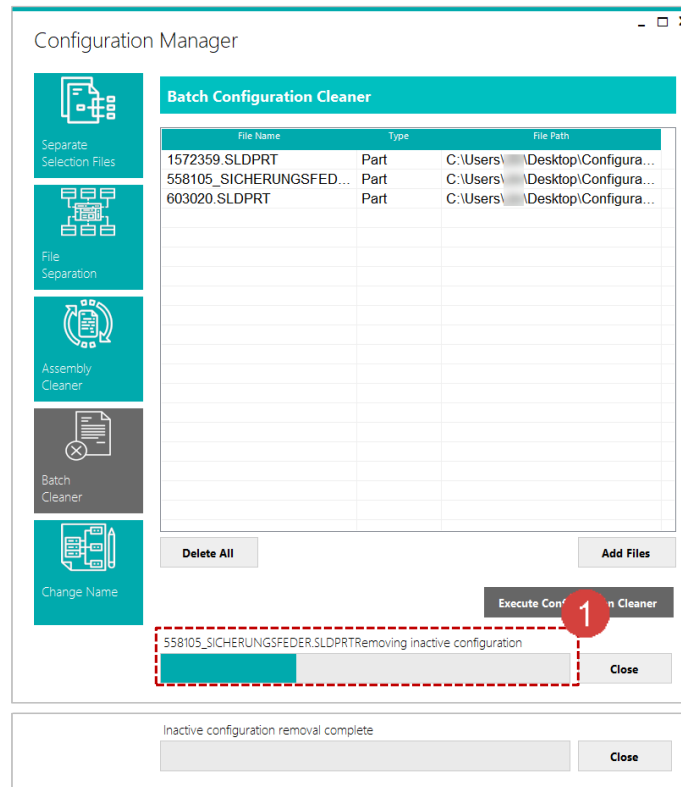
- 1 [Batch Cleaner] is similar to [Assembly Cleaner].
Its operation is applied to several files at the same time. Click the [Batch Cleaner] button.
- 2 Click [Add Files] button and select all files in **ConfigurationManager_Training/04. Batch Cleaner** folder as target file.
- 3 Click [Execute Configuration Cleaner] button to delete all inactivated configurations for target files.



Configuration Manager - Batch Cleaner Result

Work on the part with the red circle (1) following instructions by yourself.
The part with the black square (1) is an additional explanation or a reference.

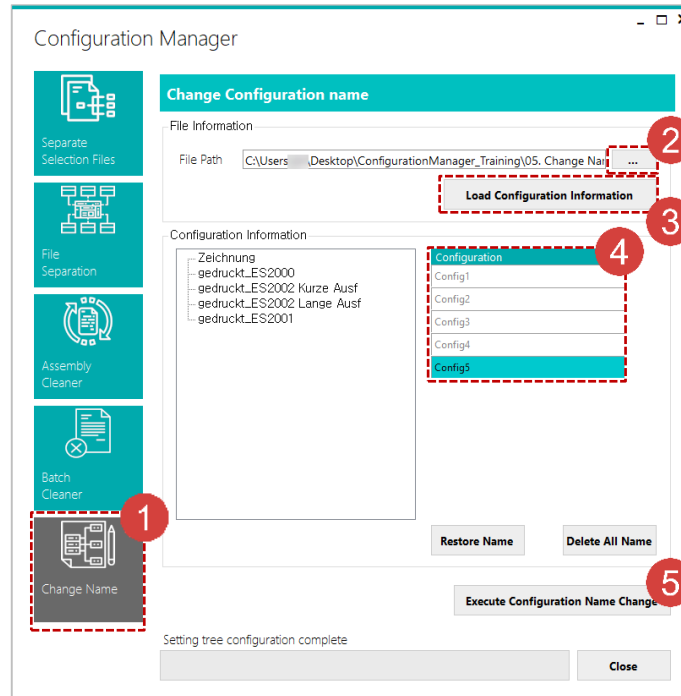
- 1 Users can check progress status with progress bar.
- 2 Execute the 558105_SICHERUNGSFEDER.SLDPRT among the target files.
- 3 Click [ConfigurationManger] in menu to check that configuration is removed.



Configuration Manager - Change Name

Work on the part with the red circle (1) following instructions by yourself.
The part with the black square (1) is an additional explanation or a reference.

- 1 **[Change Name]** is a function that easily change configuration name. Click **[Change Name]** button to move function.
- 2 Click [...] button and specify 'ConfigurationManager_Training/05. Change Name/ 558104_RIEGELFEDER.SLDPRT' as target file.
- 3 Click **[Load Configuration Information]** button to load configuration names of target file.
- 4 Change each Configuration names to 'Config1', 'Config2', ..., 'Config5' respectively.
- 5 Apply change name by clicking **[Execute Configuration Name Change]** button.



Configuration Manager - Change Name Result

Work on the part with the red circle (1) following instructions by yourself.
The part with the black square (1) is an additional explanation or a reference.

- 1 Execute **ConfigurationManager_Training/05. Change Name/ 558104_RIEGELFEDER.SLDPRT** to check the result.
- 2 Click **[ConfigurationManager]** in menu. Check the configuration names.

