

Merge Drawings Training

Merge Drawing_Training.zip



Merge Drawings - Overview

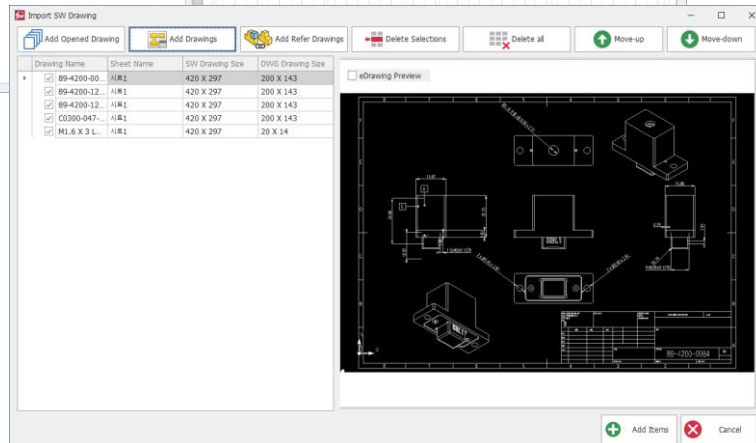
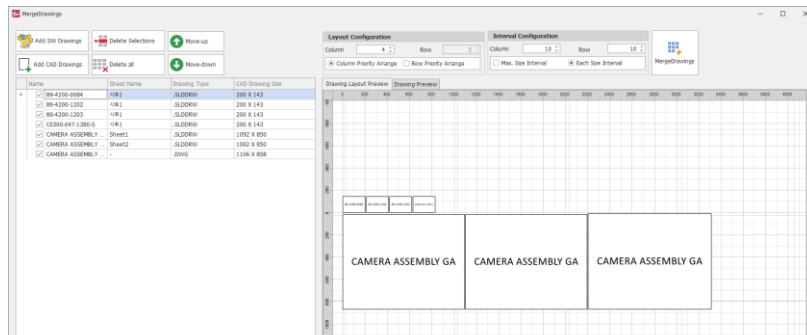
Main Function

- Batch Importing SOLIDWORKS Drawing Files
- Batch Importing DWG/DXF File Formats
- Custom Drawing Layout Configuration and Automatic Drawing Merging

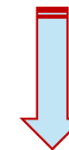
Benefits

- Reducing Reference Drawing Conversion Time by Batch Inserting SOLIDWORKS Drawings
- Create drawings with a high degree of freedom by freely configuring the drawing layout as desired by the user
- Reduce manual labor time by merging multiple drawings into one file

Course Objective: Follow the simple step-by-step instructions and learn how to use Merge Drawing.



SW Drawings DWG/DXF file



One CAD file



Merge Drawings - Preparation

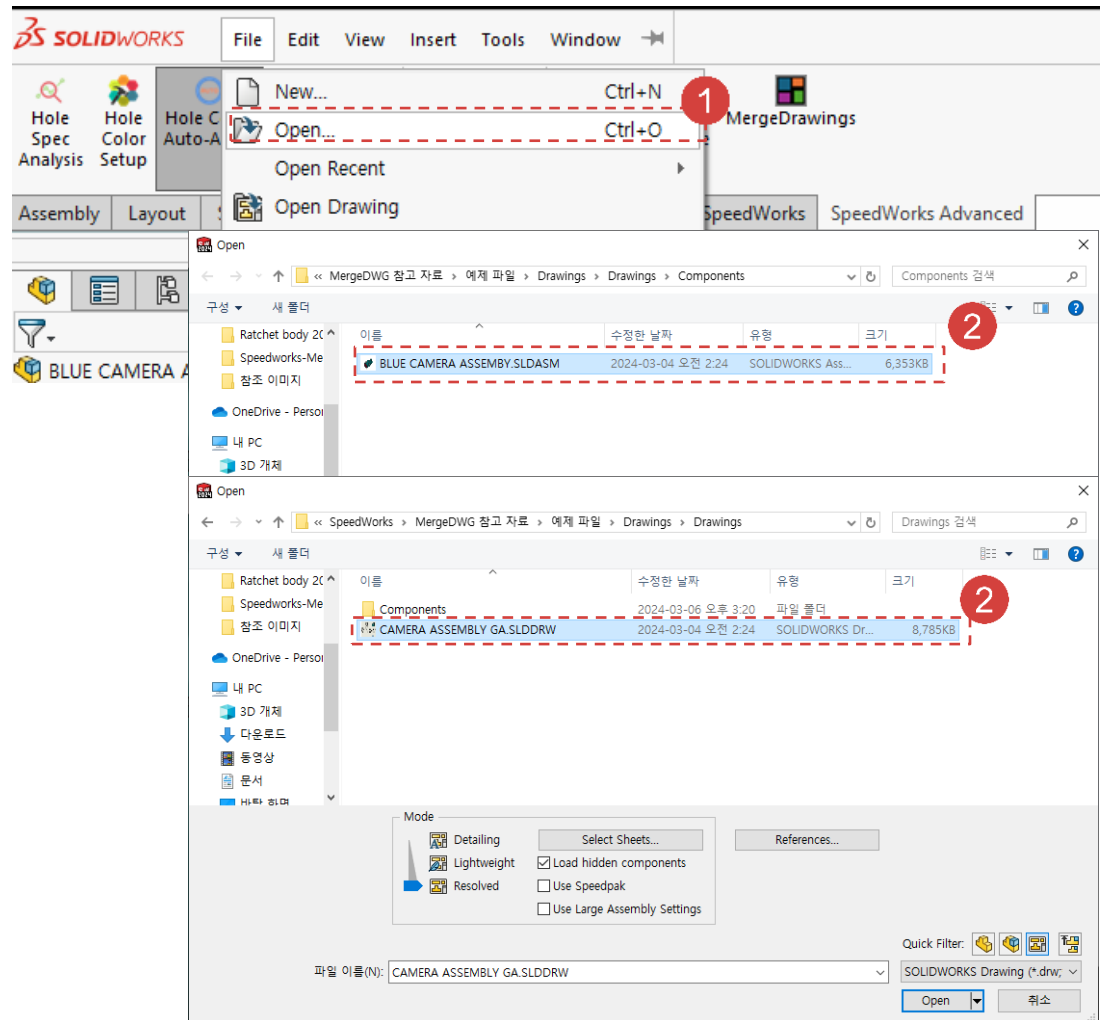
Work on the part with the red circle (1) following instructions by yourself.
The part with the black square (1) is an additional explanation or a reference.

1 Open **SOLIDWORKS** and navigate to the **[File]** tab, then select **[Open]**.

2 Example File
Select **BLUE CAMERA ASSEMBY.SLDASM**,
CAMERA ASSEMBLY GA.SLDDRW

Automatically selects open drawings among follow items. This is a preliminary preparation for loading.

You can also run and practice assembly and drawings separately during the tutorial.

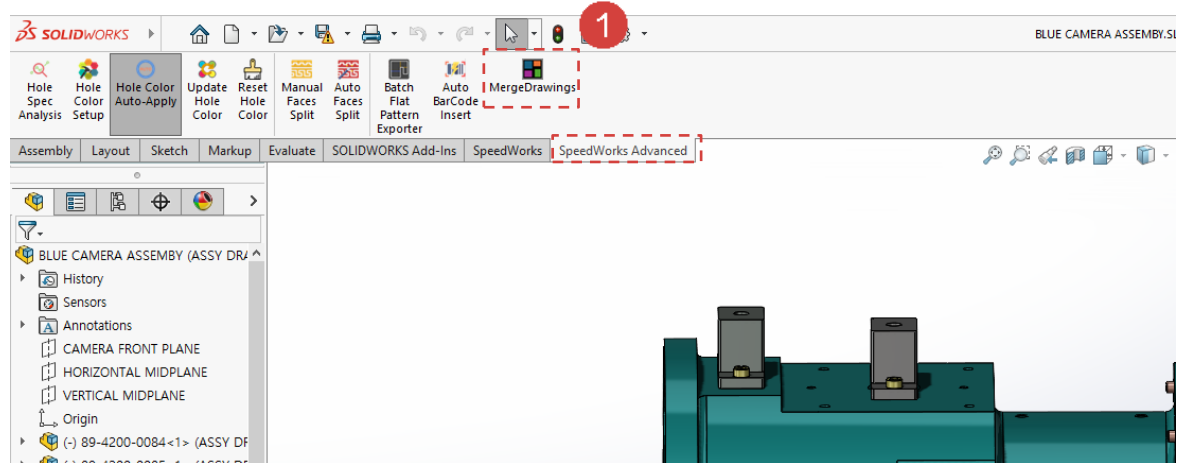
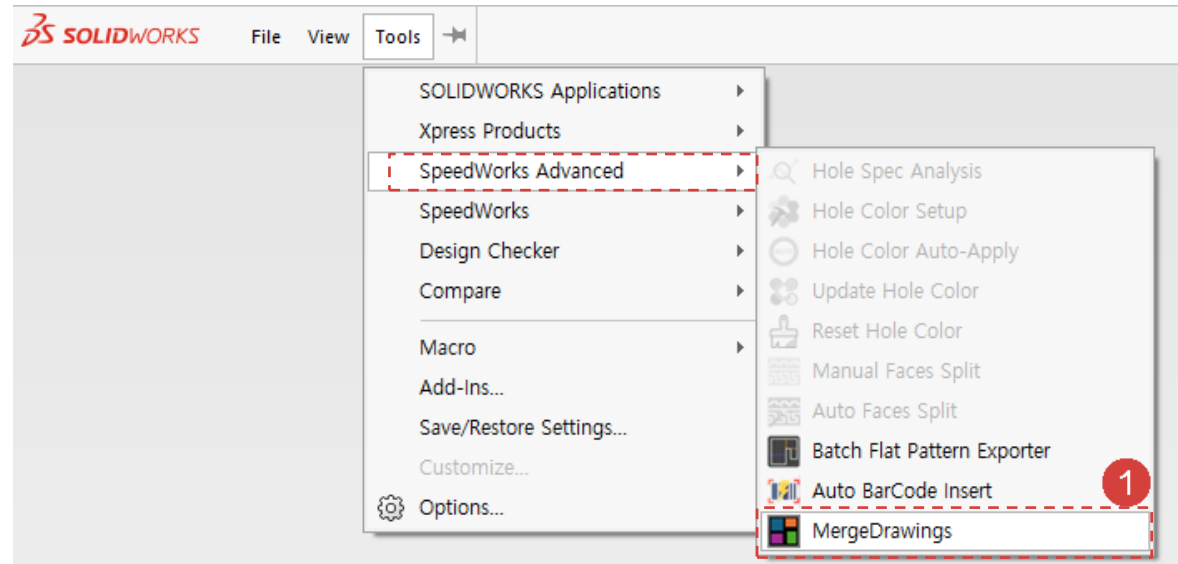


※ You can download example files at Support page in SpeedWorks Homepage(<https://speedworks.info>).

Merge Drawings - Execute

1 Click **SOLIDWORKS – [Tool] tab - [SpeedWorks Advanced] - [Merge Drawings]** to execute function.

Or, click the [SpeedWorks Advanced] tab - [Merge Drawings] button in the part/assembly/drawing file to execute it.



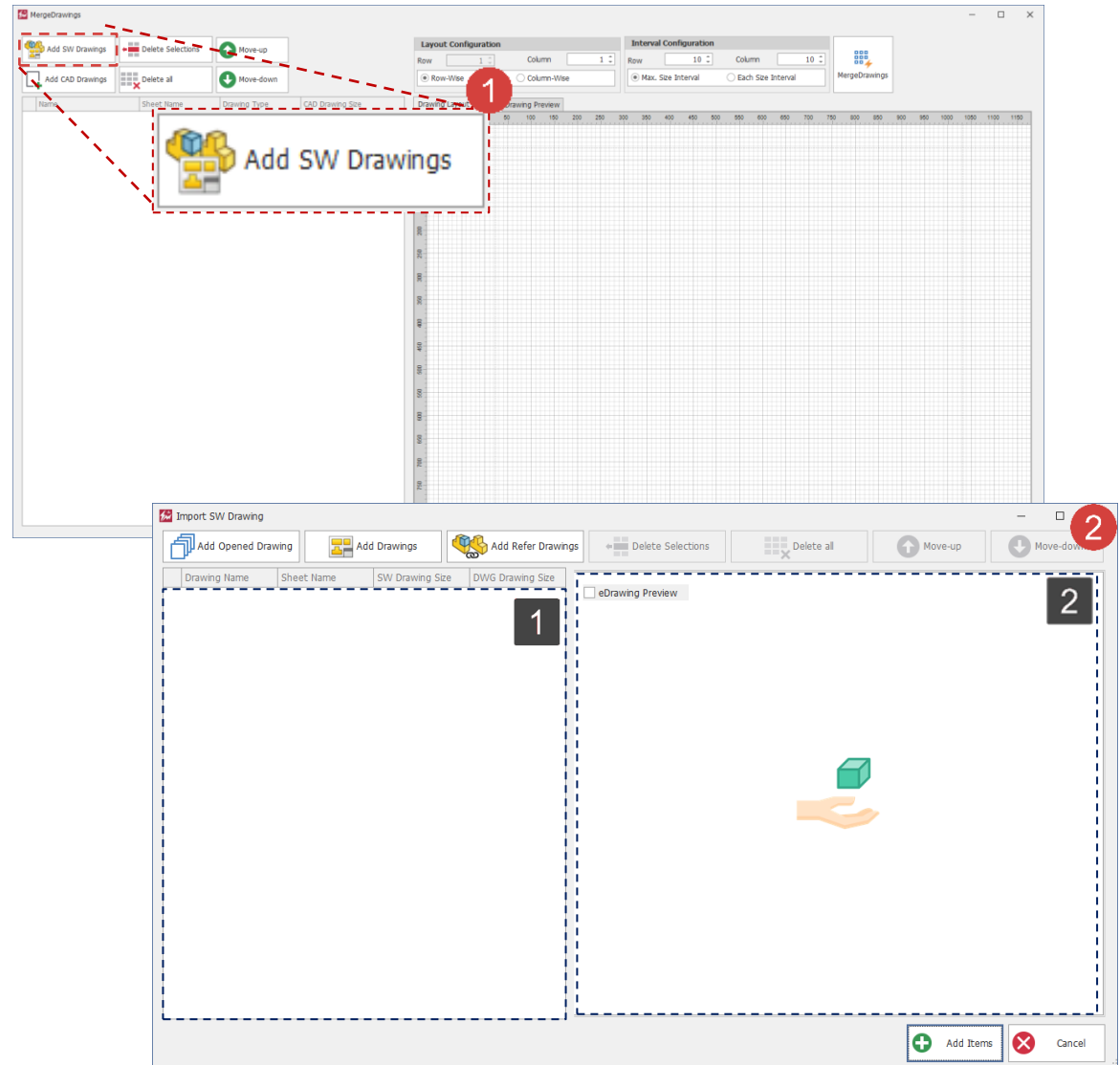
Work on the part with the red circle (1) following instructions by yourself.
The part with the black square (1) is an additional explanation or a reference.

Merge Drawings - Add SW Drawing

Work on the part with the red circle (1) following instructions by yourself.
The part with the black square (1) is an additional explanation or a reference.

- 1 Click [Add SW Drawing] button.
- 2 The second window for adding SOLIDWORKS drawings will be activated.

- 1 This is the area where the SOLIDWORKS drawing items will be displayed.
- 2 This is the area that displays SOLIDWORKS drawings in preview format.

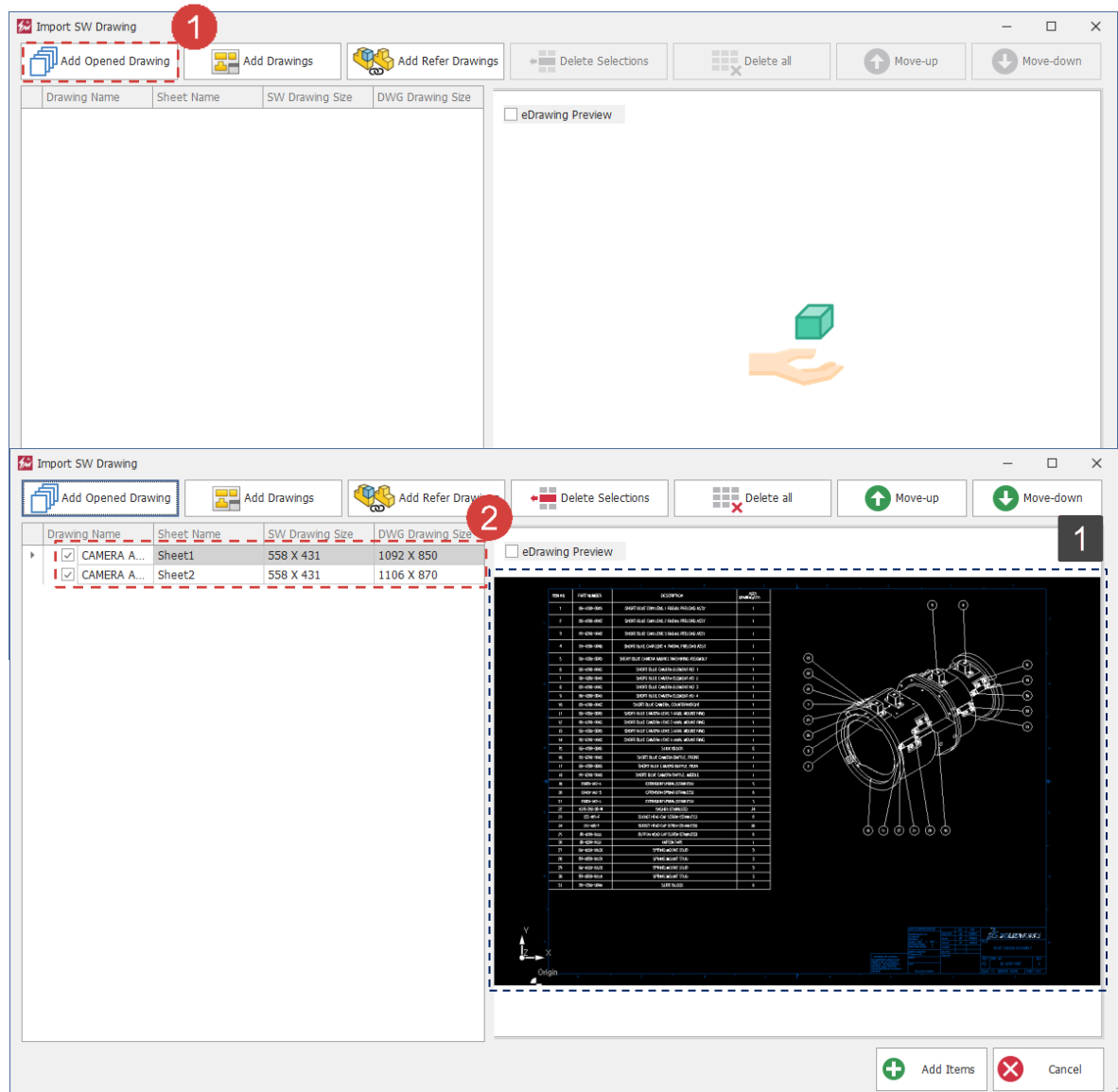


Merge Drawings - Add SW Drawings(Add Open Drawing)

Work on the part with the red circle (1) following instructions by yourself.
The part with the black square (1) is an additional explanation or a reference.

- 1 Click **[Add Open Drawing]** button.
- 2 The drawings that are already open will be added as shown in the image.

- 1 The selected items will be displayed in the preview as shown in the image.



Merge Drawings - Add SW Drawings(Add Drawings)

Work on the part with the red circle (1) following instructions by yourself.
The part with the black square (1) is an additional explanation or a reference.

1 Click [Add Drawings] button.

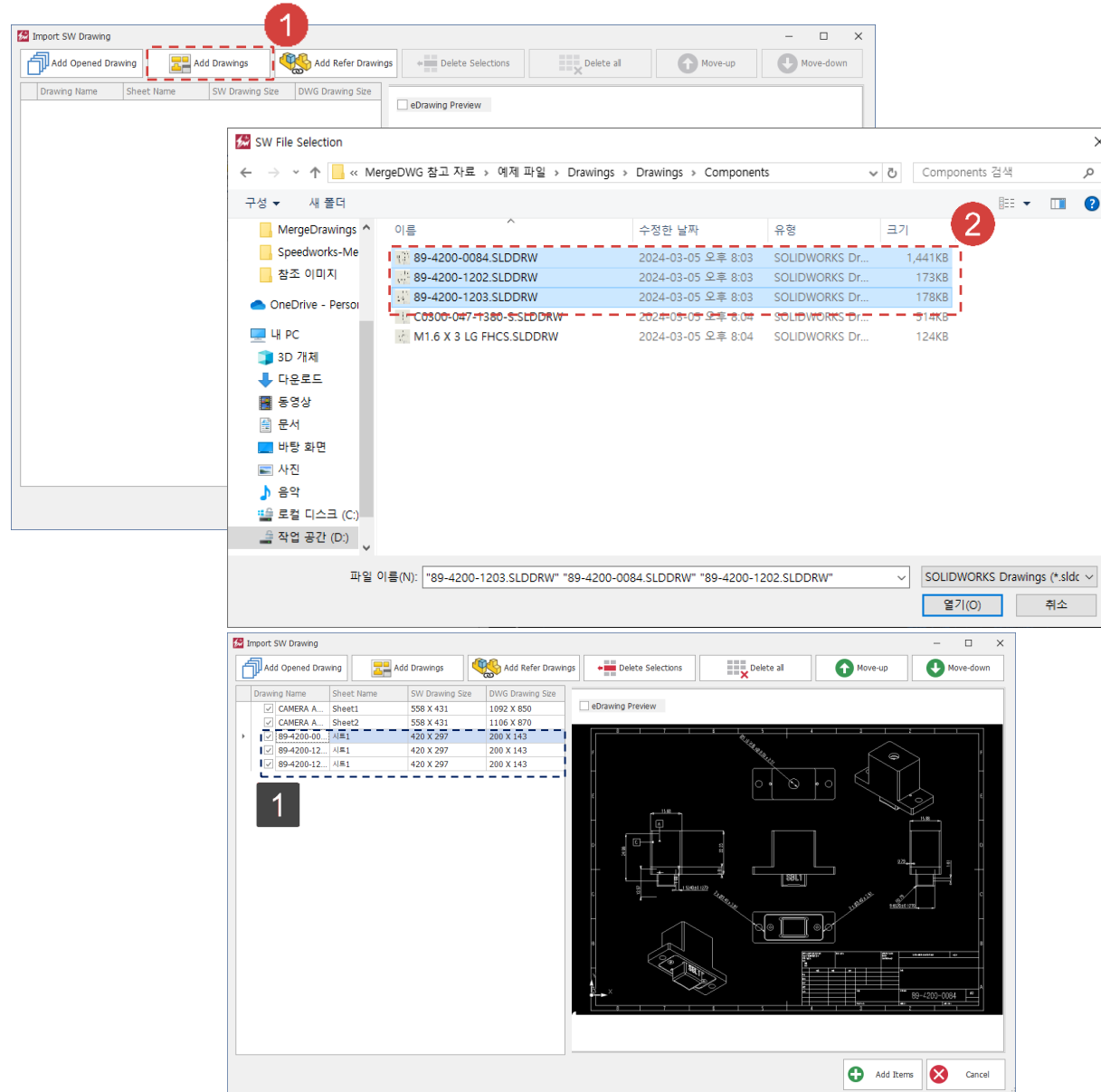
2 Example File

Select **89-4200-0084.SLDDRW**,

89-4200-1202.SLDDRW,

89-4200-1203.SLDDRW.

1 When the drawing analysis is completed, the items will be added as shown in the picture.



Merge Drawings - Add SW Drawing(Add Reference Drawing)

Work on the part with the red circle (1) following instructions by yourself.
The part with the black square (1) is an additional explanation or a reference.

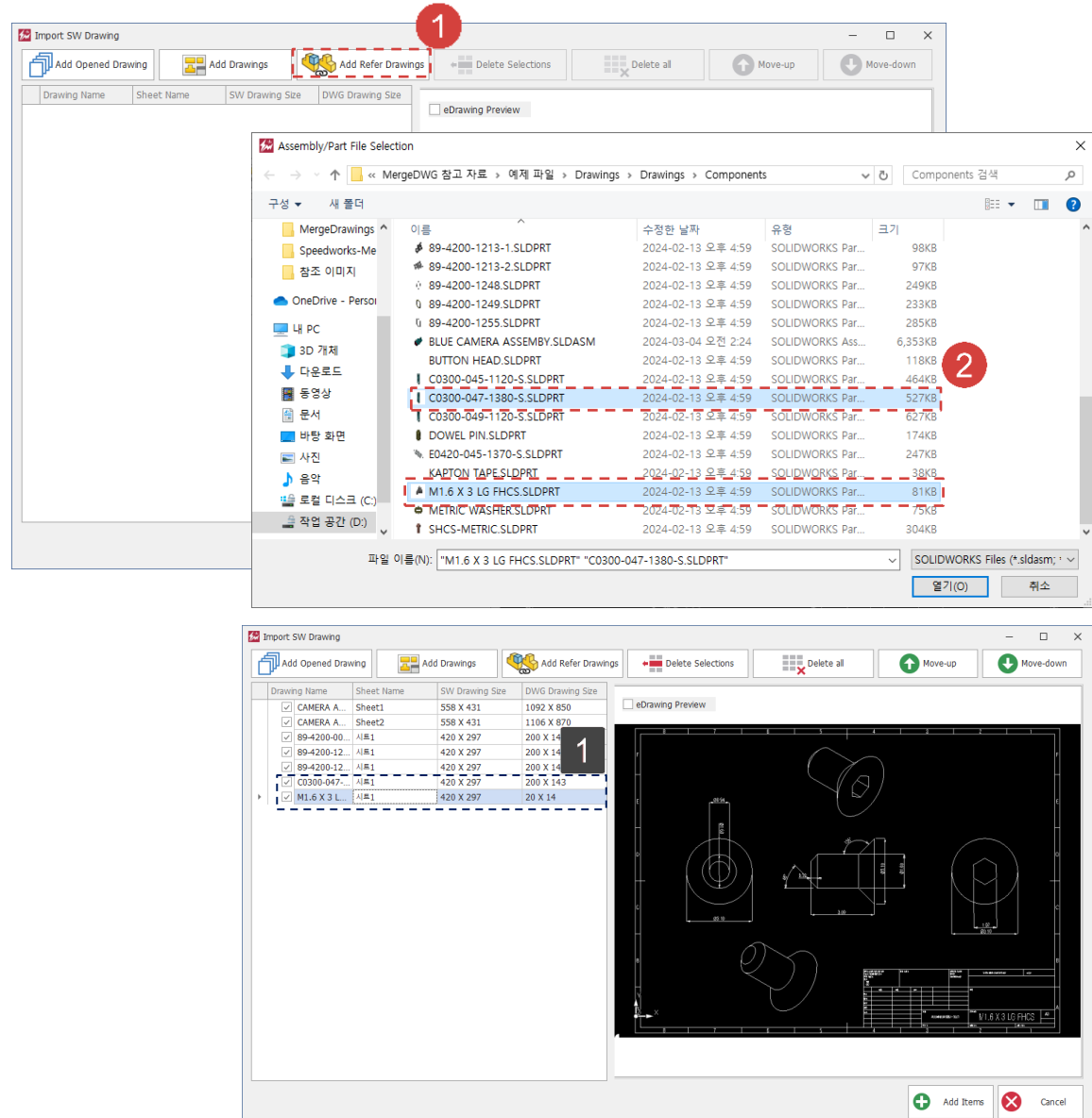
1 Click [Add Reference Drawing] button.

2 Example File

Select **C0300-047-1380-S.SLDPRT**,

M1.6 X 3 LG FHCS.SLDPRT

1 When the drawing analysis is completed, the items will be added as shown in the picture.

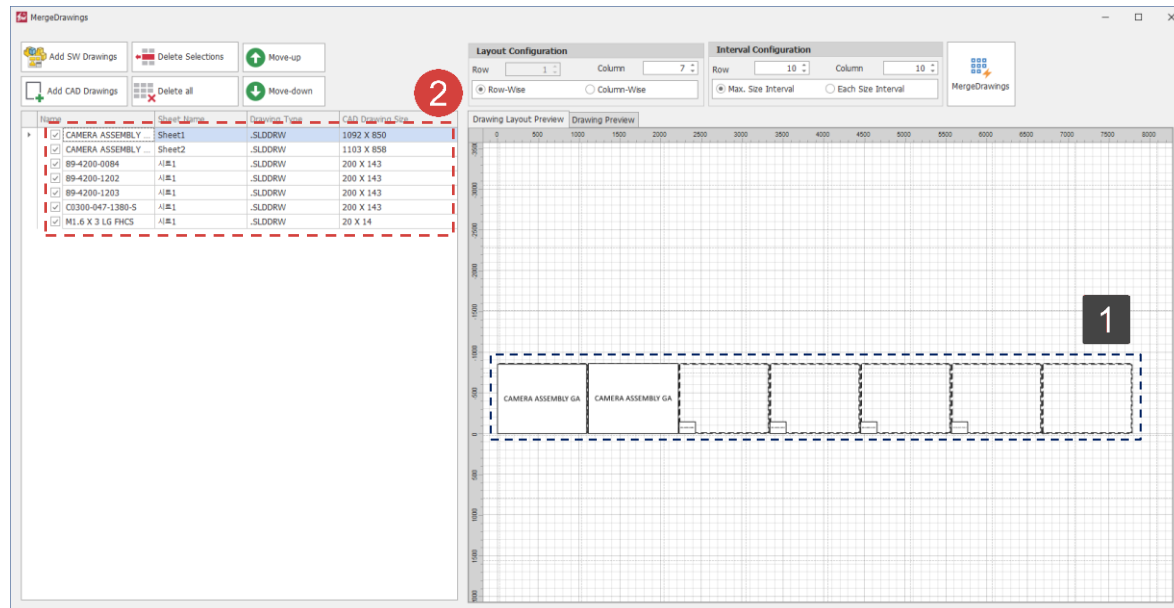
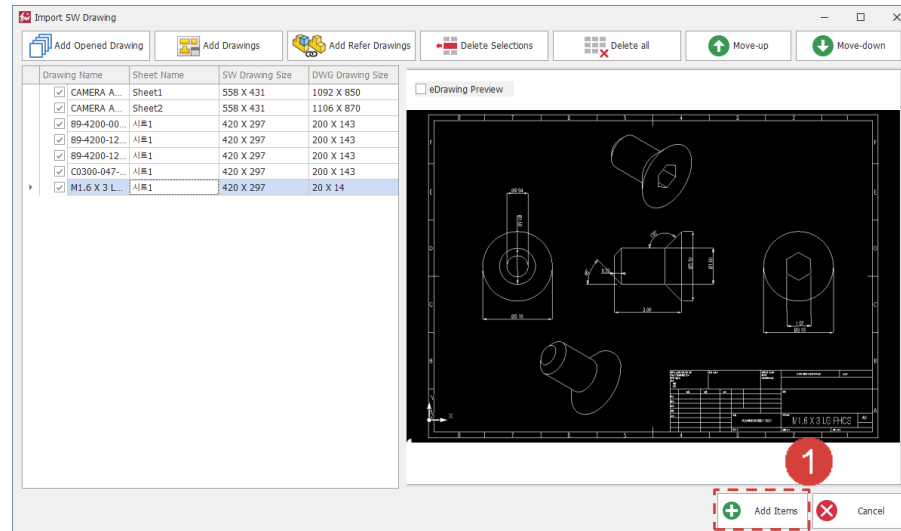


Merge Drawings - Add SW Drawing Item

Work on the part with the red circle (1) following instructions by yourself.
The part with the black square (1) is an additional explanation or a reference.

- 1 Click [Add Item] button.
- 2 SOLIDWORKS drawing items will be added to the main window as shown in the image.

- 1 A preview of the drawing positions is displayed based on the layout settings.

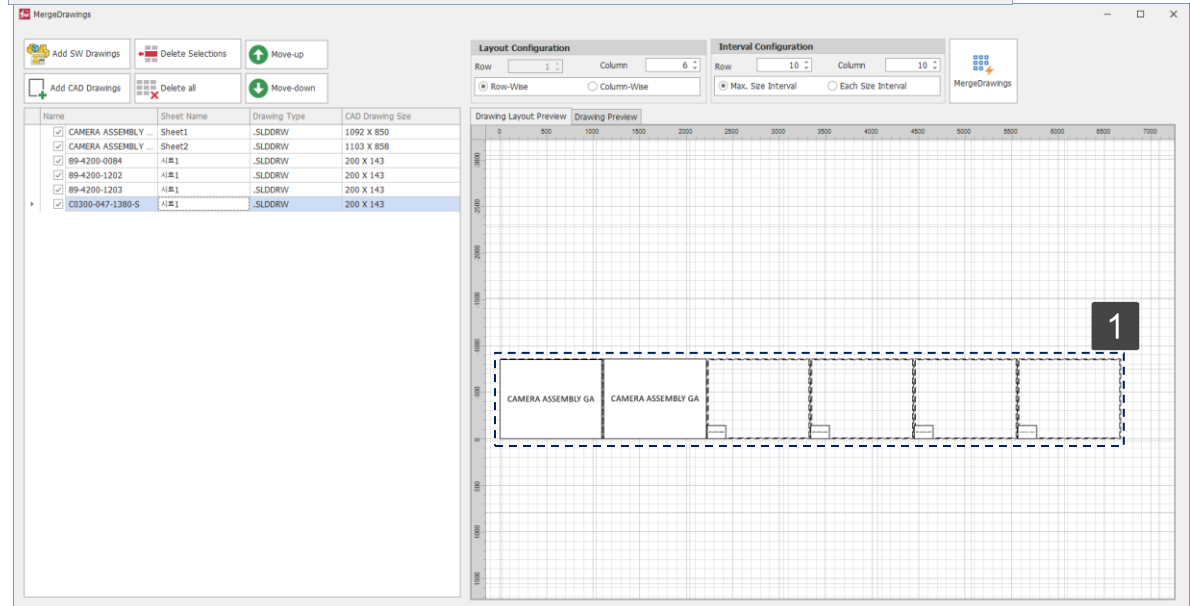
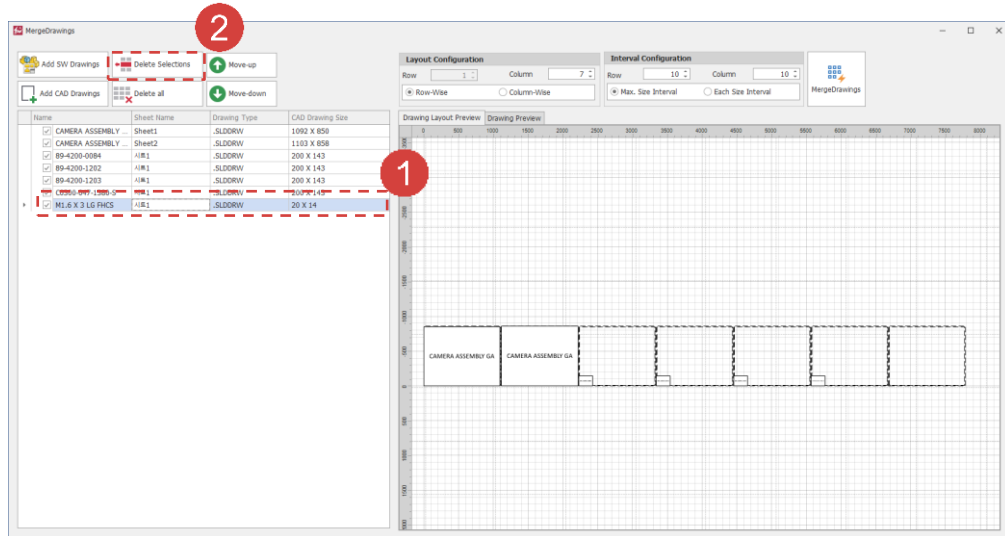


Merge Drawings - Delete Item

Work on the part with the red circle (1) following instructions by yourself.
The part with the black square (1) is an additional explanation or a reference.

- 1 Select item **M1.6 X 3 LG FHCS**.
- 2 Click [Remove Selection] button.

- 1 The preview is automatically updated when selected items are removed



Merge Drawings - Move Item

Work on the part with the red circle (1) following instructions by yourself.
The part with the black square (1) is an additional explanation or a reference.

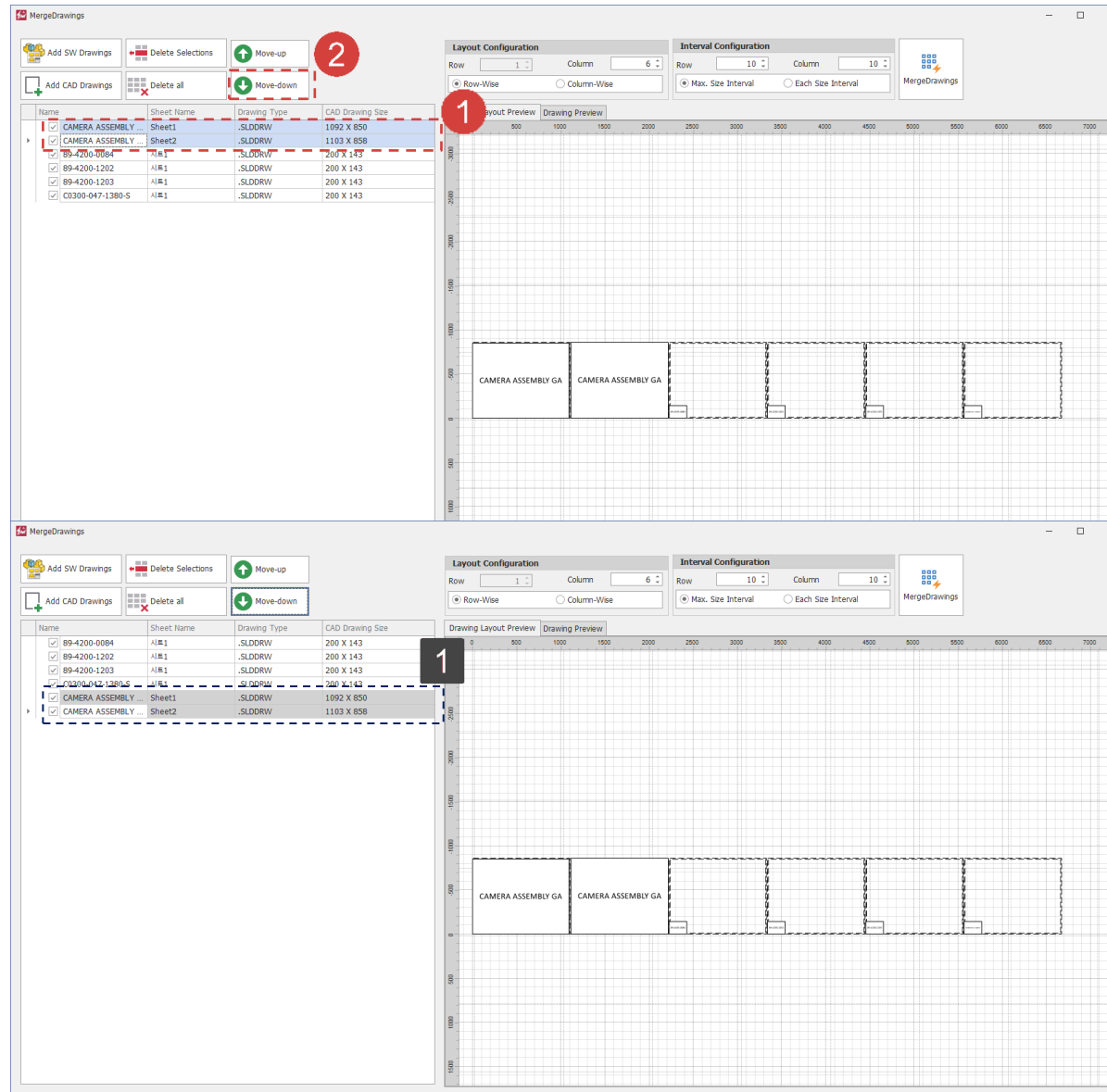
1 Select item **Ctrl + CAMERA ASSEMBLY GA**

Sheet1, Shee2.

2 Click [**Move Down**] button to move it to the bottom.

1 The selected item can be moved to the desired position as shown in the picture.

The order of drawing items follows the criteria of the drawing layout.



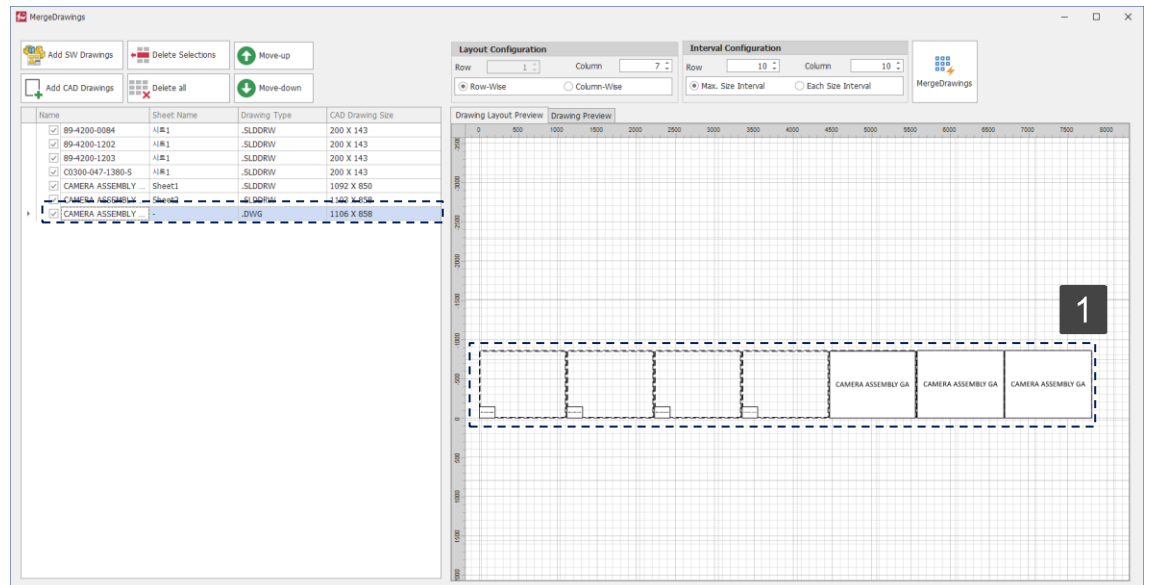
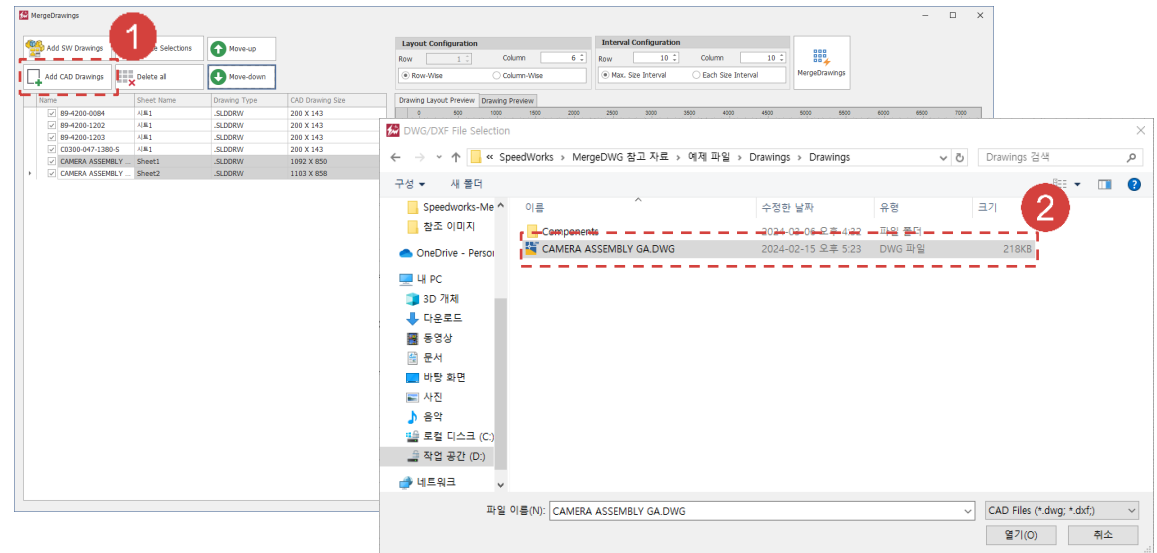
Merge Drawings - Add DWG/DXF

Work on the part with the red circle (1) following instructions by yourself.
The part with the black square (1) is an additional explanation or a reference.

1 Click [Add DWG/DXF] button.

2 Select the example file **CAMERA ASSEMBLY GA.DWG**

1 The added DWG/DXF drawing items are included in the list along with the SOLIDWORKS drawings and are also displayed in the layout preview



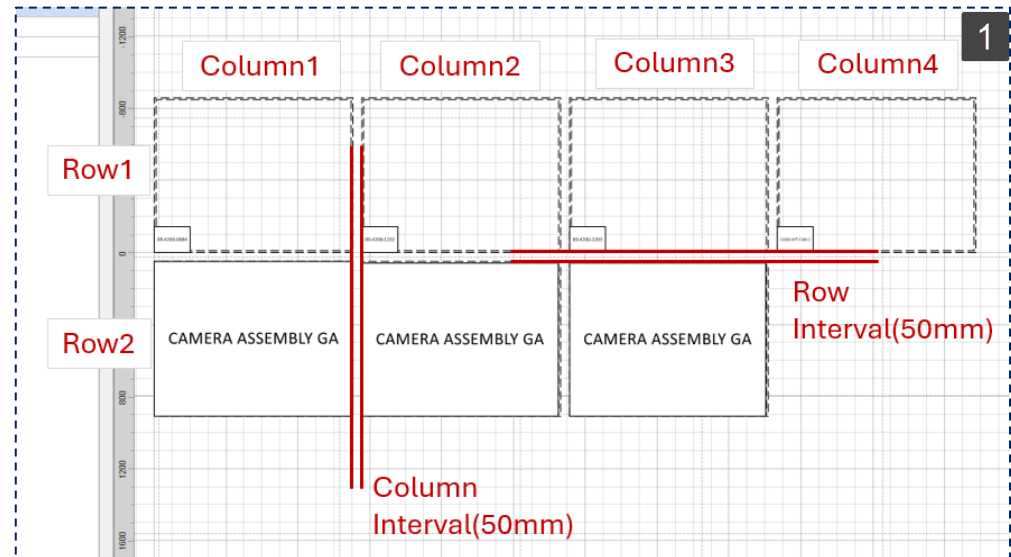
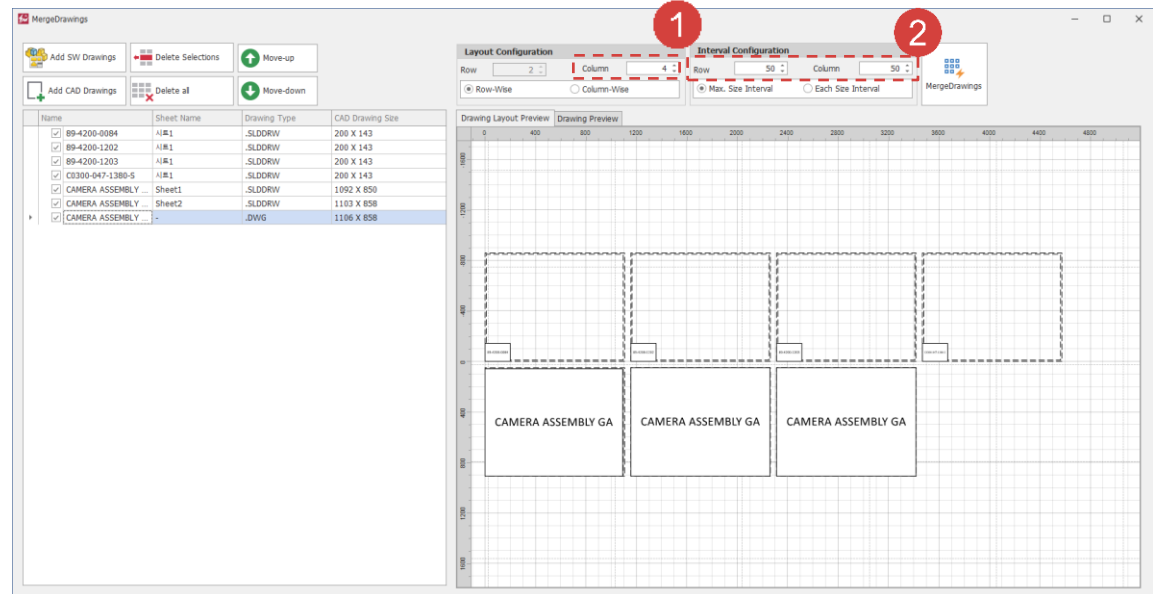
Merge Drawings - Drawing Layout Setting

Work on the part with the red circle (1) following instructions by yourself.
The part with the black square (1) is an additional explanation or a reference.

1 Set the column setting value in the layout configuration to "4".

2 Set the column spacing to "50" and the row spacing to "50".

1 As shown in the image, users can configure the desired drawing layout.



Merge Drawings - Execute Merge Drawings

Work on the part with the red circle (1) following instructions by yourself.
The part with the black square (1) is an additional explanation or a reference.

1 Click [Merge Drawings] button.

2 Set the desired file name.

The default is "MergeDrawing_[date].DWG".

1 When the drawing merging process is completed, a new DWG file is created with a completion window as shown.

